



Emergency Procedures Science Research Building

1504 W. Mulberry St., Denton, TX 76201

Shelter

You may need to take shelter for **severe weather** (most common) or a **hazardous materials release**.

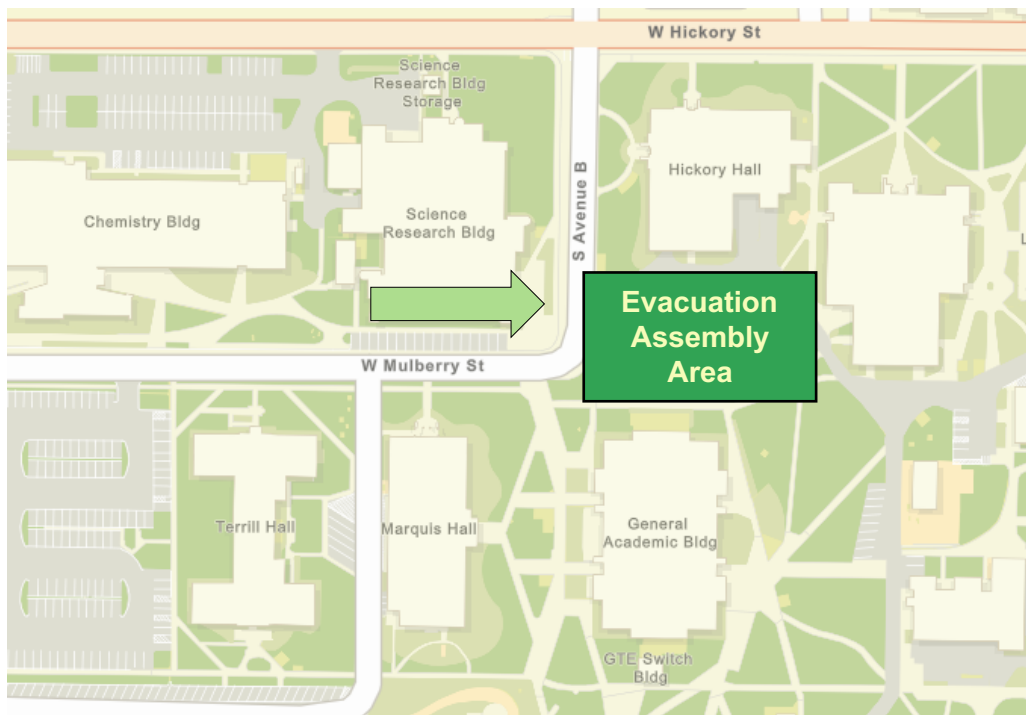
During an incident requiring individuals to take **shelter**, all building occupants should immediately move to the designated Tornado Shelter Areas in the building. If unable to safely move to the designated shelter area, seek shelter in a windowless interior room or hallway on the lowest floor of the building.

All building occupants should take shelter in the interior hallways of the lowest floor. Avoid standing near windows, exterior walls, and doors made of glass.

Evacuation

If you need to evacuate the building—for a fire, bomb threat, gas leak, or other event—all building occupants should immediately move to the nearest EXIT. Once outside, proceed to the designated Evacuation Assembly Area. If unable to safely move to the designated assembly area, contact one or more members of your department or unit to let them know you are safe and your whereabouts.

Persons with mobility impairments who are unable to safely exit the building should be moved to a designated **Area of Refuge** (also called a **Fire Refuge Area**) and await assistance from emergency responders. **All building occupants should immediately evacuate the building and proceed to the grassy area north of the General Academic Building.**



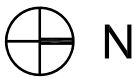
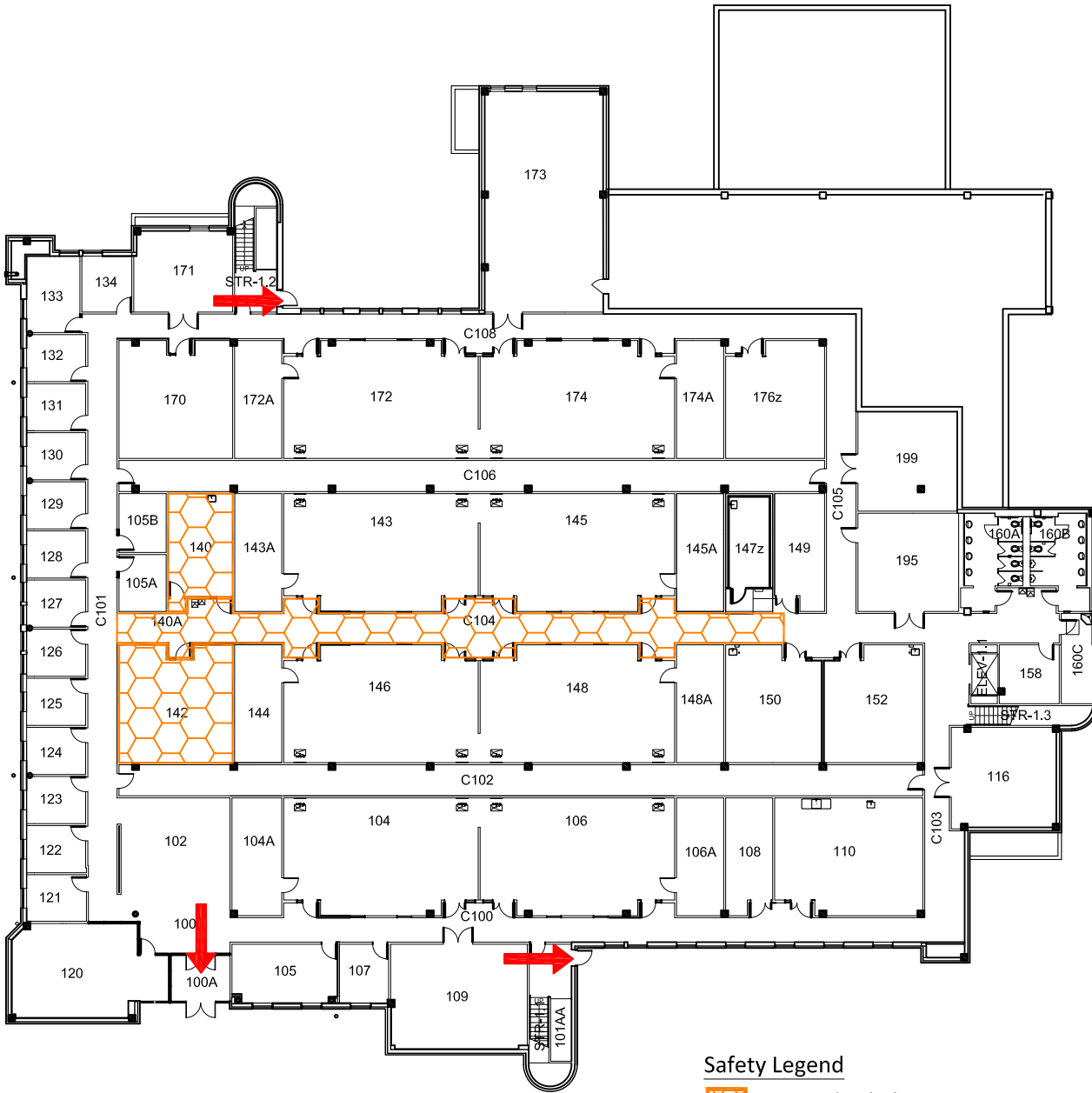
For more information on what to do in a specific emergency situation, refer to the UNT Emergency Guidelines on www.emergency.unt.edu or the Mean Green Ready app. **Call 911 in an emergency!**

SCIENCE RESEARCH BLDG

BUILDING #0103




02-2018

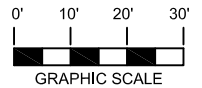
Exterior Gross Area
30372



FIRST FLOOR PLAN

Safety Legend

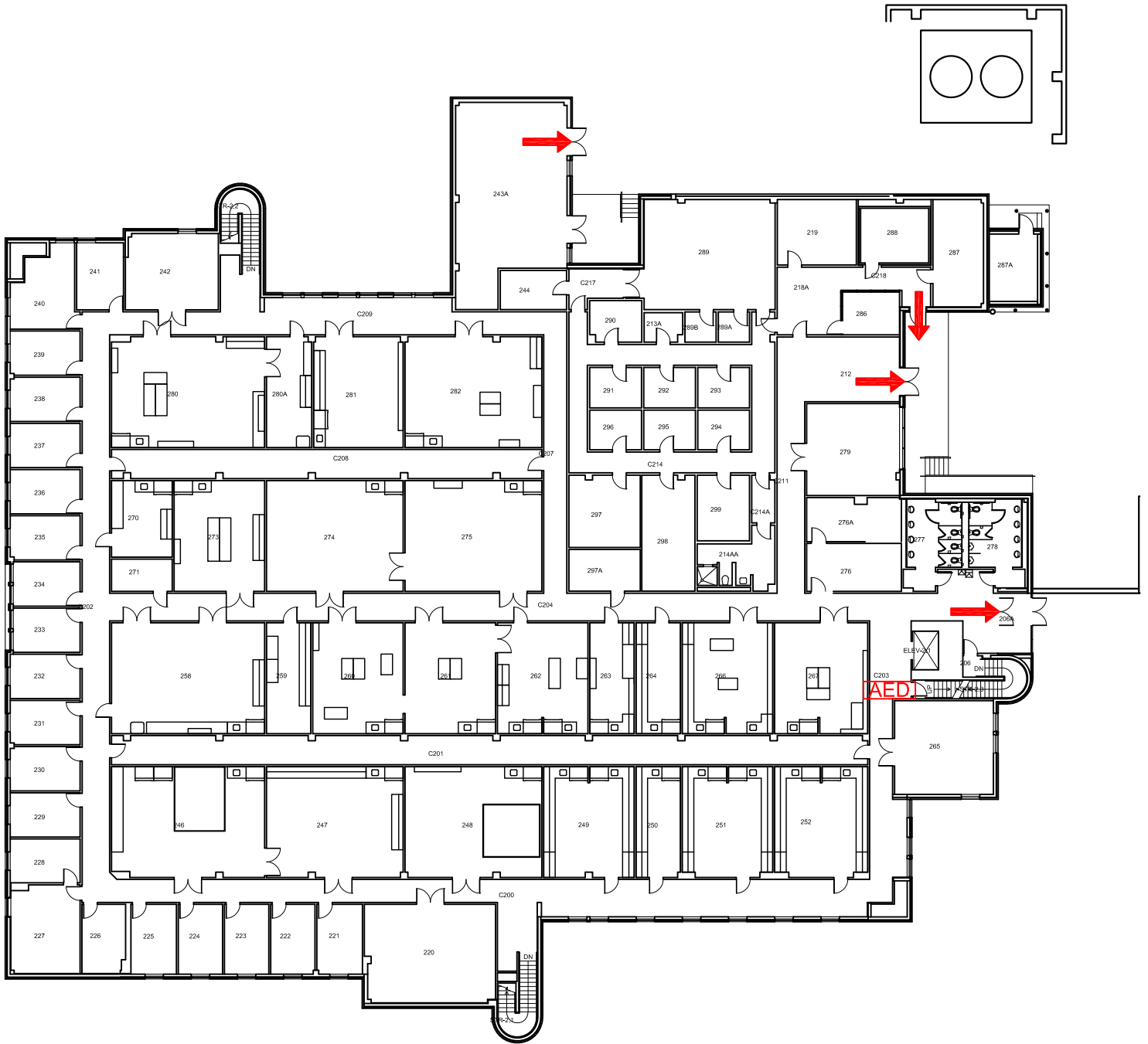
-  Tornado Shelter Areas
-  Exit/Evacuation Routes
In case of fire, do not use elevator
-  AED Automatic External Defibrillator



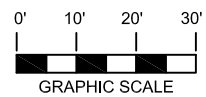
SCIENCE RESEARCH BLDG

BUILDING #0103

12-2016



SECOND FLOOR PLAN



Safety Legend



Tornado Shelter Areas



Exit/Evacuation Routes

In case of fire, do not use elevator



Automatic External Defibrillator