



Emergency Procedures

Oak Street Hall

1120 W. Oak St., Denton, TX 76201

Shelter

You may need to take shelter for **severe weather** (most common) or a **hazardous materials release**.

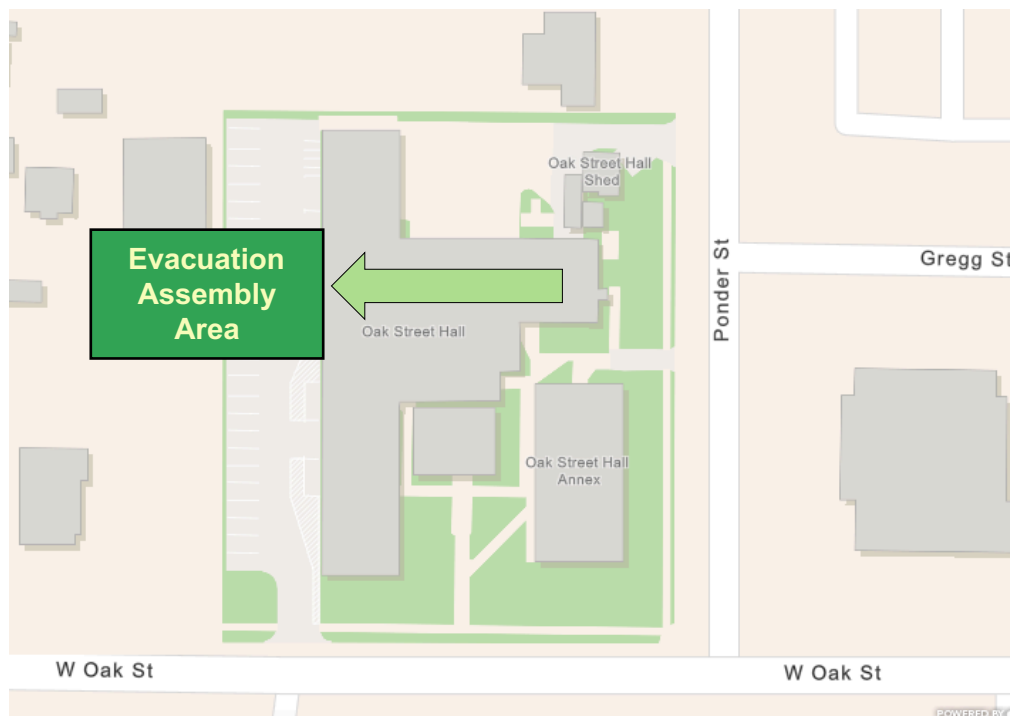
During an incident requiring individuals to take **shelter**, all building occupants should immediately move to the designated Tornado Shelter Areas in the building. If unable to safely move to the designated shelter area, seek shelter in a windowless interior room or hallway on the lowest floor of the building.

All building occupants should take shelter in the interior hallways and restrooms of the lowest floor. Avoid standing near windows, exterior walls, and doors made of glass.

Evacuation

If you need to evacuate the building—for a fire, bomb threat, gas leak, or other event—all building occupants should immediately move to the nearest EXIT. Once outside, proceed to the designated Evacuation Assembly Area. If unable to safely move to the designated assembly area, contact one or more members of your department or unit to let them know you are safe and your whereabouts.

Persons with mobility impairments who are unable to safely exit the building should be moved to a designated **Area of Refuge** (also called a **Fire Refuge Area**) and await assistance from emergency responders. **All building occupants should immediately evacuate the building and proceed to Parking Lot 59 west of Oak Street Hall.**



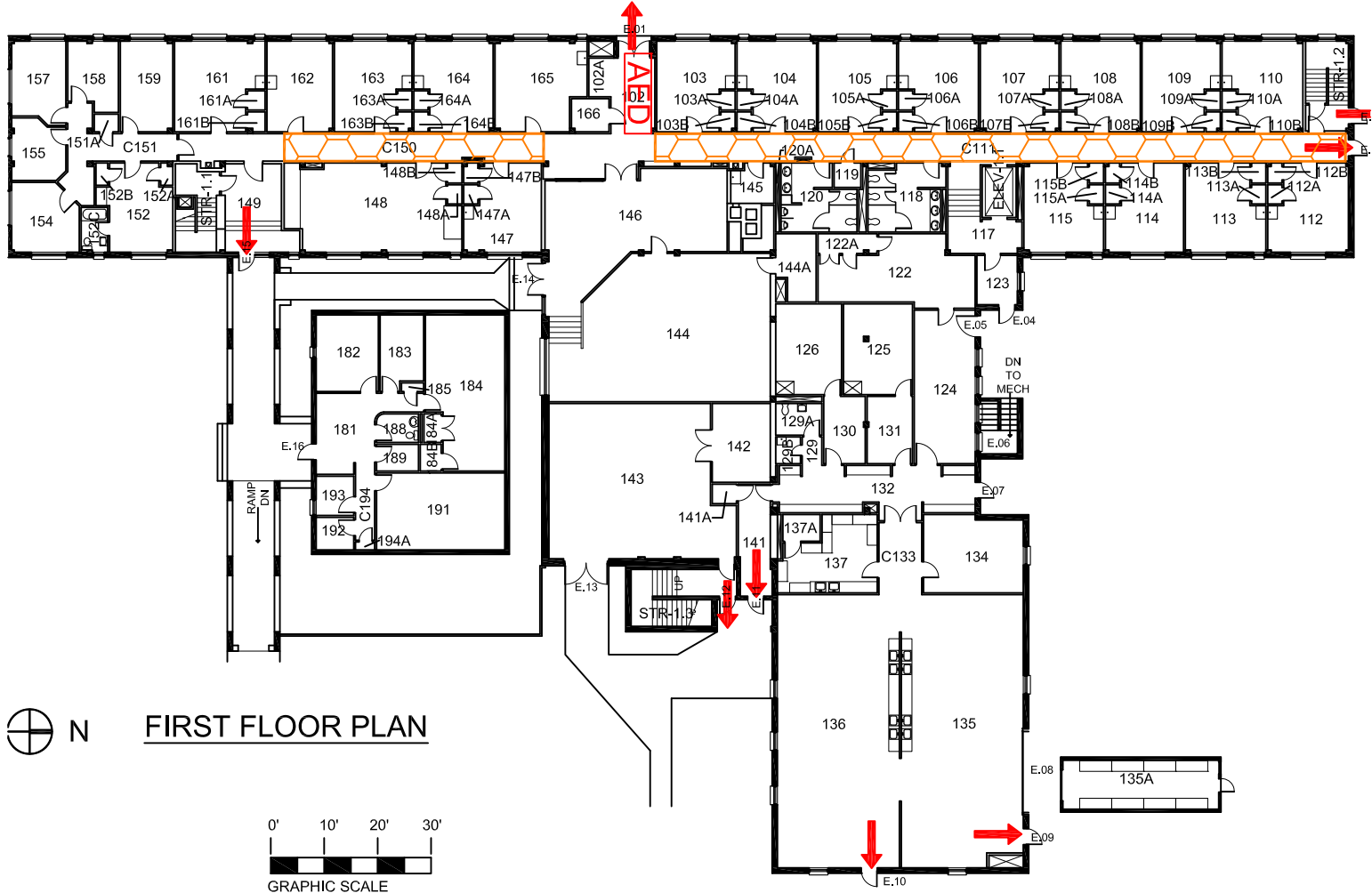
For more information on what to do in a specific emergency situation, refer to the UNT Emergency Guidelines on www.emergency.unt.edu or the Mean Green Ready app. **Call 911 in an emergency!**

OAK STREET HALL

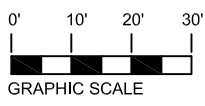
BUILDING #0132

08-2013

Exterior Gross Area
20393



FIRST FLOOR PLAN



Safety Legend

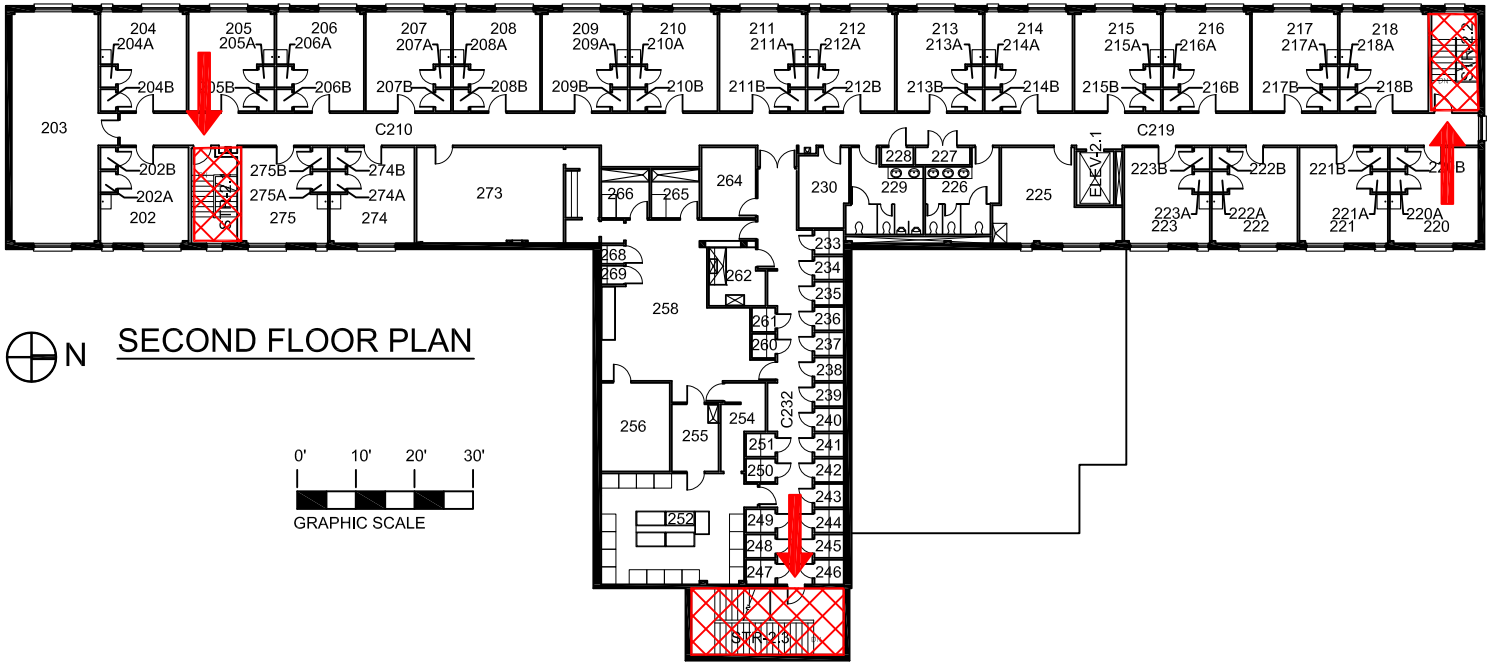
- Areas of Refuge
- Tornado Shelter Areas
- Exit/Evacuation Routes
- In case of fire, do not use elevator*
- Automatic External Defibrillator
- Evacuation Chair

OAK STREET HALL

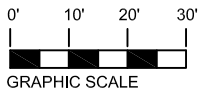
BUILDING #0132

07-2007



Exterior Gross Area
13365




 N **SECOND FLOOR PLAN**





Safety Legend

-  Areas of Refuge
-  Tornado Shelter Areas

 Exit/Evacuation Routes

In case of fire, do not use elevator

 Automatic External Defibrillator

 Evacuation Chair