



Emergency Procedures for Kappa Delta

990 W. Highland St., Denton, TX 76201

Shelter

You may need to take shelter for **severe weather** (most common) or a **hazardous materials release**.

During an incident requiring individuals to take **shelter**, all building occupants should immediately move to the designated Tornado Shelter Areas in the building. If unable to safely move to the designated shelter area, seek shelter in a windowless interior room or hallway on the lowest floor of the building.

Residents and other building occupants should take shelter on the first floor in the hallways and the east and west ends of the building. Avoid standing near windows, exterior walls, and doors made of glass.

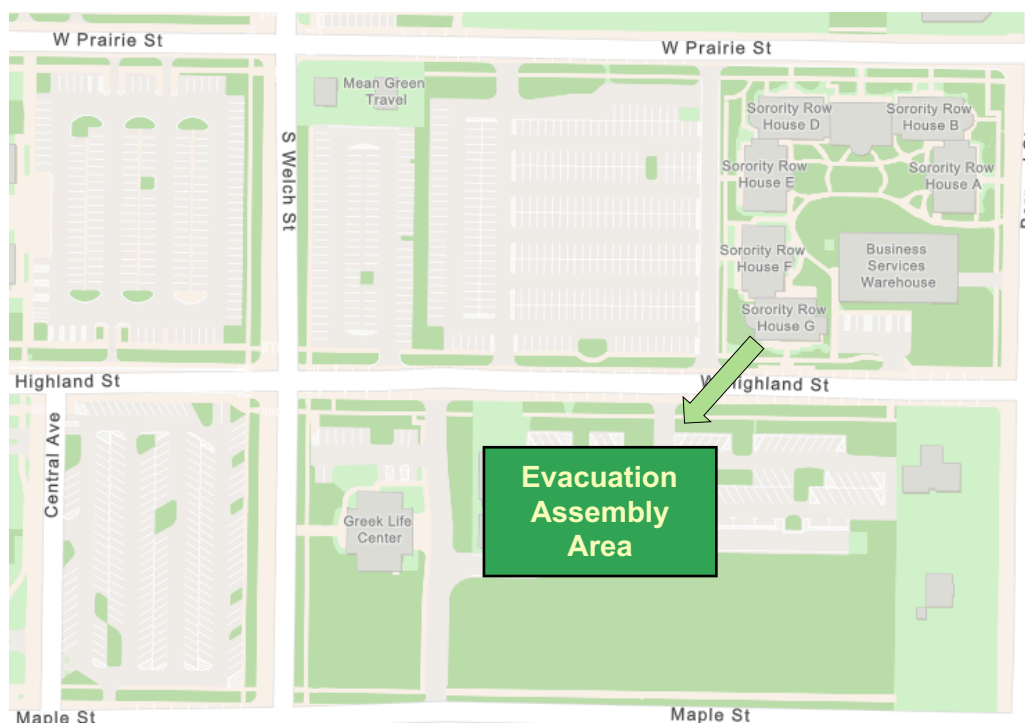
Evacuation

If you need to evacuate the building—for a fire, bomb threat, gas leak, or other event—all building occupants should immediately move to the nearest EXIT. Once outside, proceed to the designated Evacuation Assembly Area.

Persons with mobility impairments who are unable to safely exit the building should be moved to a designated **Area of Refuge** (also called a **Fire Refuge Area**) and await assistance from emergency responders.

Residents and other building occupants should immediately evacuate the building and proceed to Parking Lot 40 east of the Greek Life Center.

For more information on what to do in a specific emergency situation, refer to the UNT Emergency Guidelines on www.emergency.unt.edu or the Mean Green Ready app. **Call 911 in an emergency!**

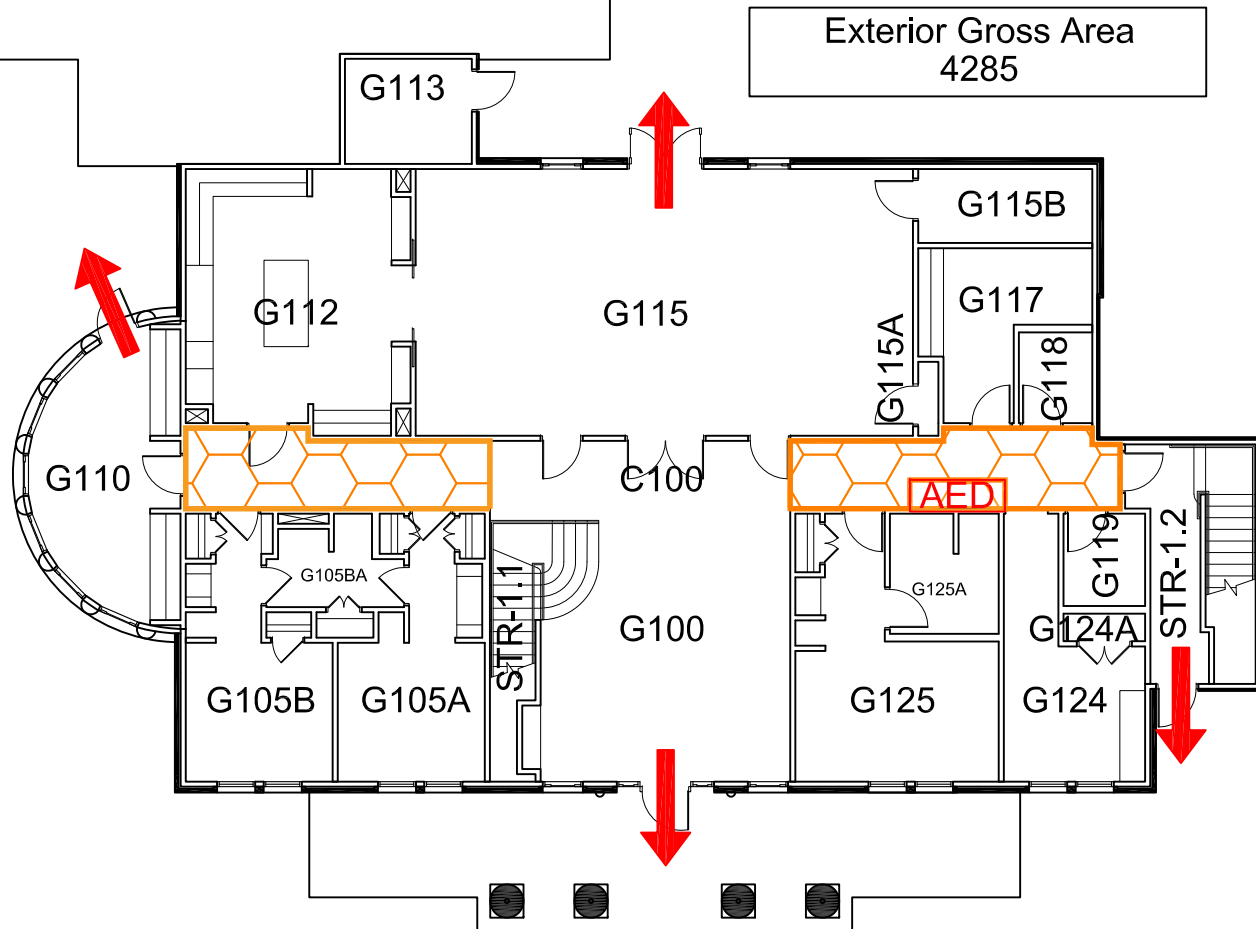


SORORITY HOUSE G

BUILDING # 0356

05-2019

Exterior Gross Area
4285

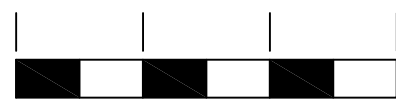


N



FIRST FLOOR PLAN

0' 10' 20' 30'



GRAPHIC SCALE

Safety Legend



Areas of Refuge



Tornado Shelter Areas



Exit/Evacuation Routes

In case of fire, do not use elevator



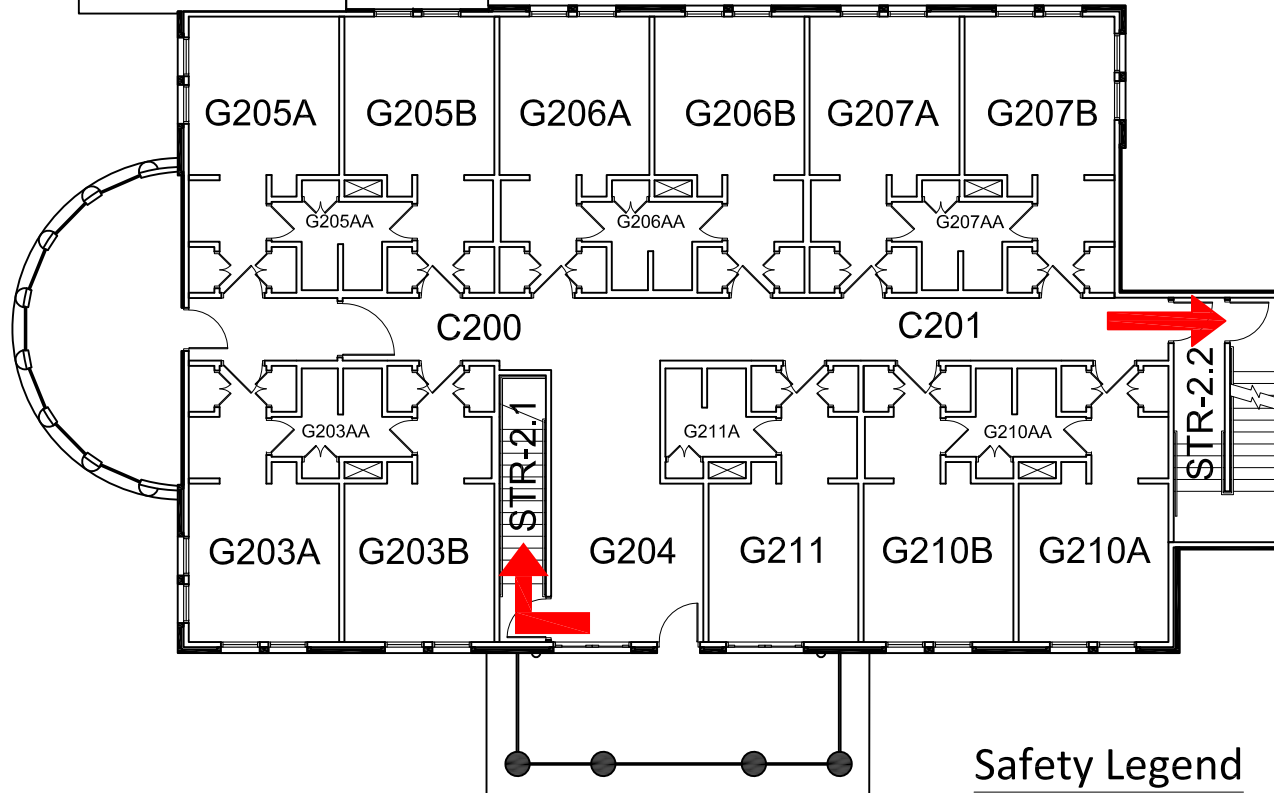
Automatic External Defibrillator

SORORITY HOUSE G

BUILDING # 0356

05-2019

Exterior Gross Area
3931



N



SECOND FLOOR PLAN

0' 10' 20' 30'



GRAPHIC SCALE

Safety Legend



Areas of Refuge



Tornado Shelter Areas



Exit/Evacuation Routes

In case of fire, do not use elevator



AED Automatic External Defibrillator