



Emergency Procedures for Hall Park

UNT at Frisco

2811 Internet Blvd. Suite 100, Frisco, TX 75034

Shelter

You may need to take shelter for **severe weather** (most common) or a **hazardous materials release**.

During an incident requiring individuals to take **shelter**, all building occupants should immediately move to the designated Tornado Shelter Areas in the building. If unable to safely move to the designated shelter area, seek shelter in a windowless interior room or hallway on the lowest floor of the building.

All building occupants should take shelter in the central restrooms or the interior hallways, away from windows, exterior walls, and doors made of glass.

Evacuation

If you need to evacuate the building—for a fire, bomb threat, gas leak, or other event—all building occupants should immediately move to the nearest EXIT. Once outside, proceed to the designated Evacuation Assembly Area. If unable to safely move to the designated assembly area, contact one or more members of your department or unit to let them know where you are.

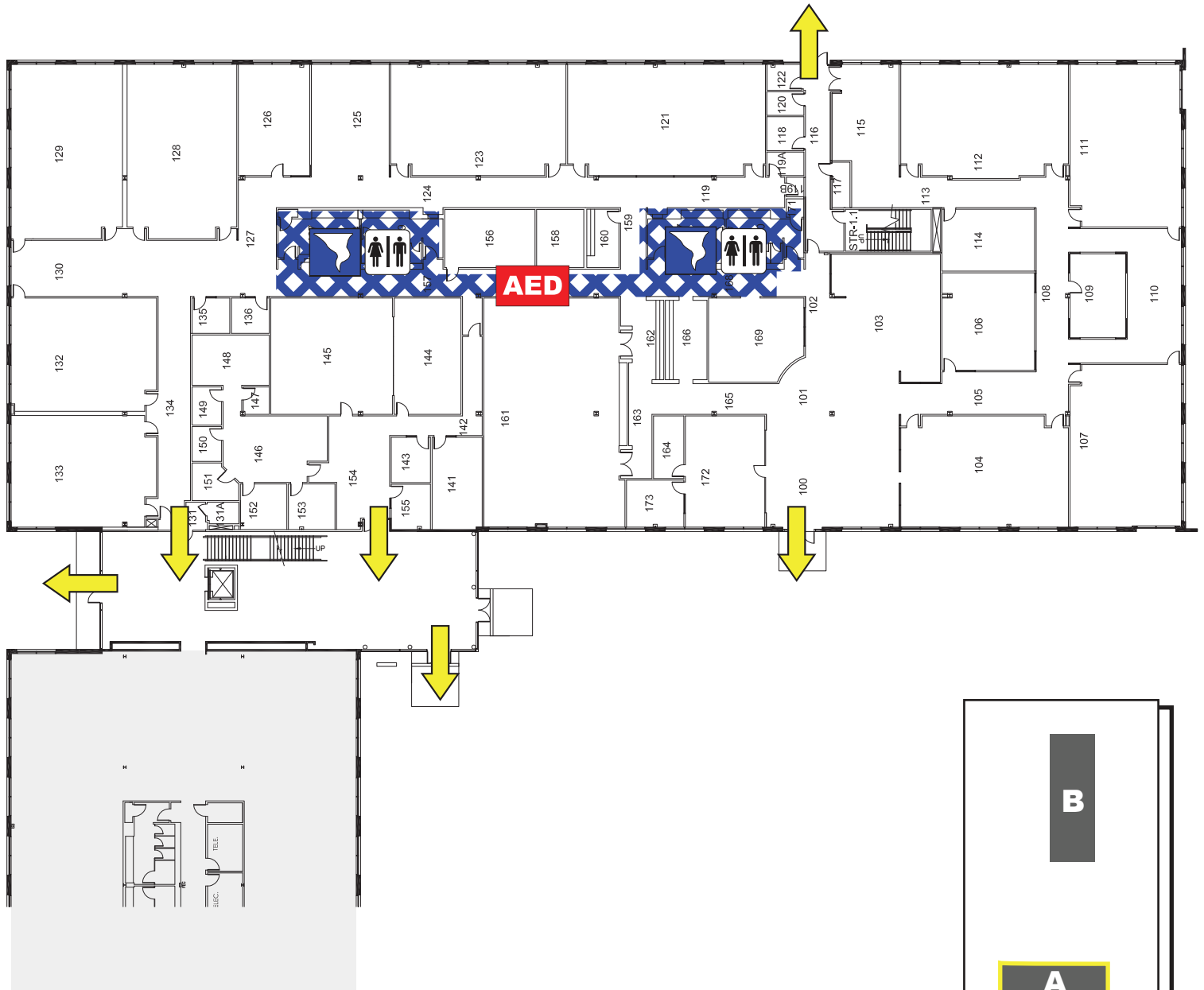
All building occupants should immediately evacuate the building and proceed to the parking lot to the east of the building, across Internet Blvd. Use caution when crossing the road.



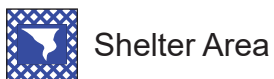
For more information on what to do in a specific emergency situation, refer to the UNT Emergency Guidelines on www.emergency.unt.edu or the Mean Green Ready app. **Call 911 in an emergency!**

HALL PARK A

FIRST FLOOR PLAN



LEGEND



Shelter Area



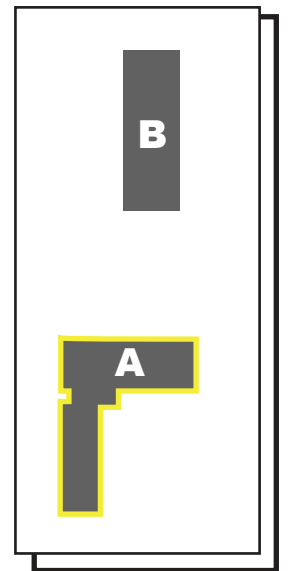
Exit



Automated External Defibrillator

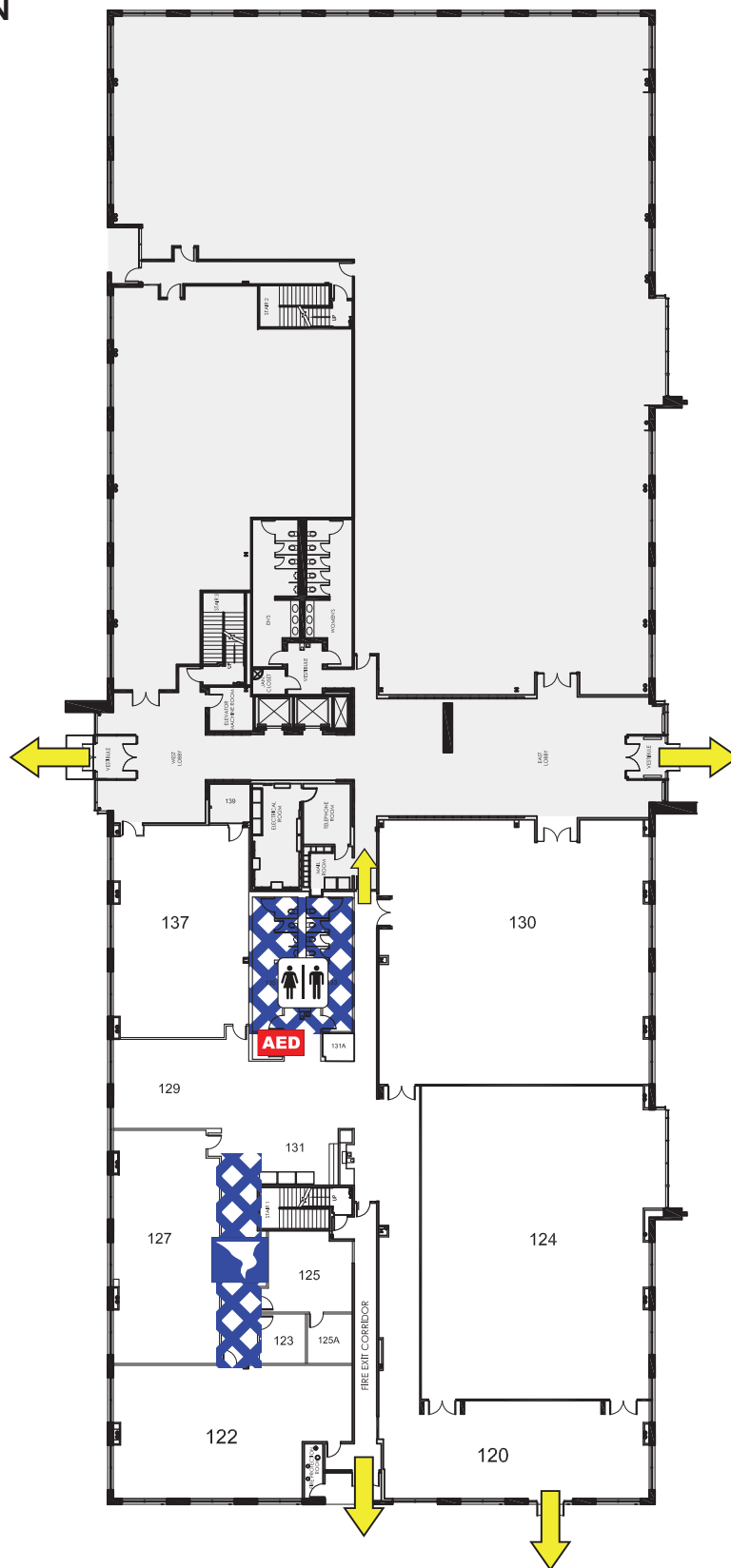
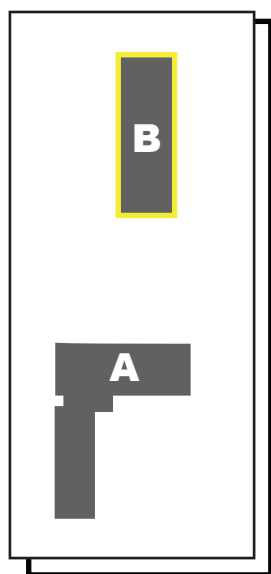


Restrooms



HALL PARK B

FIRST FLOOR PLAN



LEGEND



Shelter Area



Exit



Automated External Defibrillator



Restrooms

