



# Emergency Procedures for Athletic Office/Olympic Sports Complex – Mean Green Village Bldg. H

1536 S. Bonnie Brae St., Denton, TX 76207

## Shelter

You may need to take shelter for **severe weather** (most common) or a **hazardous materials release**.

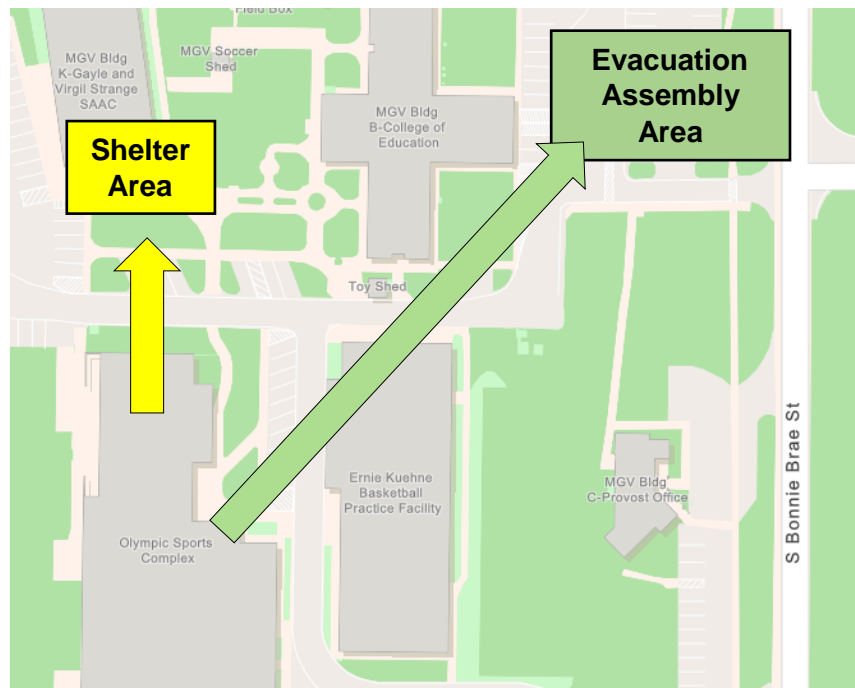
During an incident requiring individuals to take **shelter**, all building occupants should immediately move to the designated Tornado Shelter Areas in the building. If unable to safely move to the designated shelter area, seek shelter in a windowless interior room or hallway on the lowest floor of the building.

**All building occupants should take shelter in rooms 187, 185H, and 153. If time permits, take shelter in the Student Athlete Academic Center.** Avoid standing near windows, exterior walls, and doors made of glass.

## Evacuation

If you need to evacuate the building—for a fire, bomb threat, gas leak, or other event—all building occupants should immediately move to the nearest EXIT. Once outside, proceed to the designated Evacuation Assembly Area. If unable to safely move to the designated assembly area, contact one or more members of your department or unit to let them know you are safe and your whereabouts.

**All building occupants should immediately evacuate the building and proceed to Parking Lot 72 northeast of the Office Complex and Gym.**

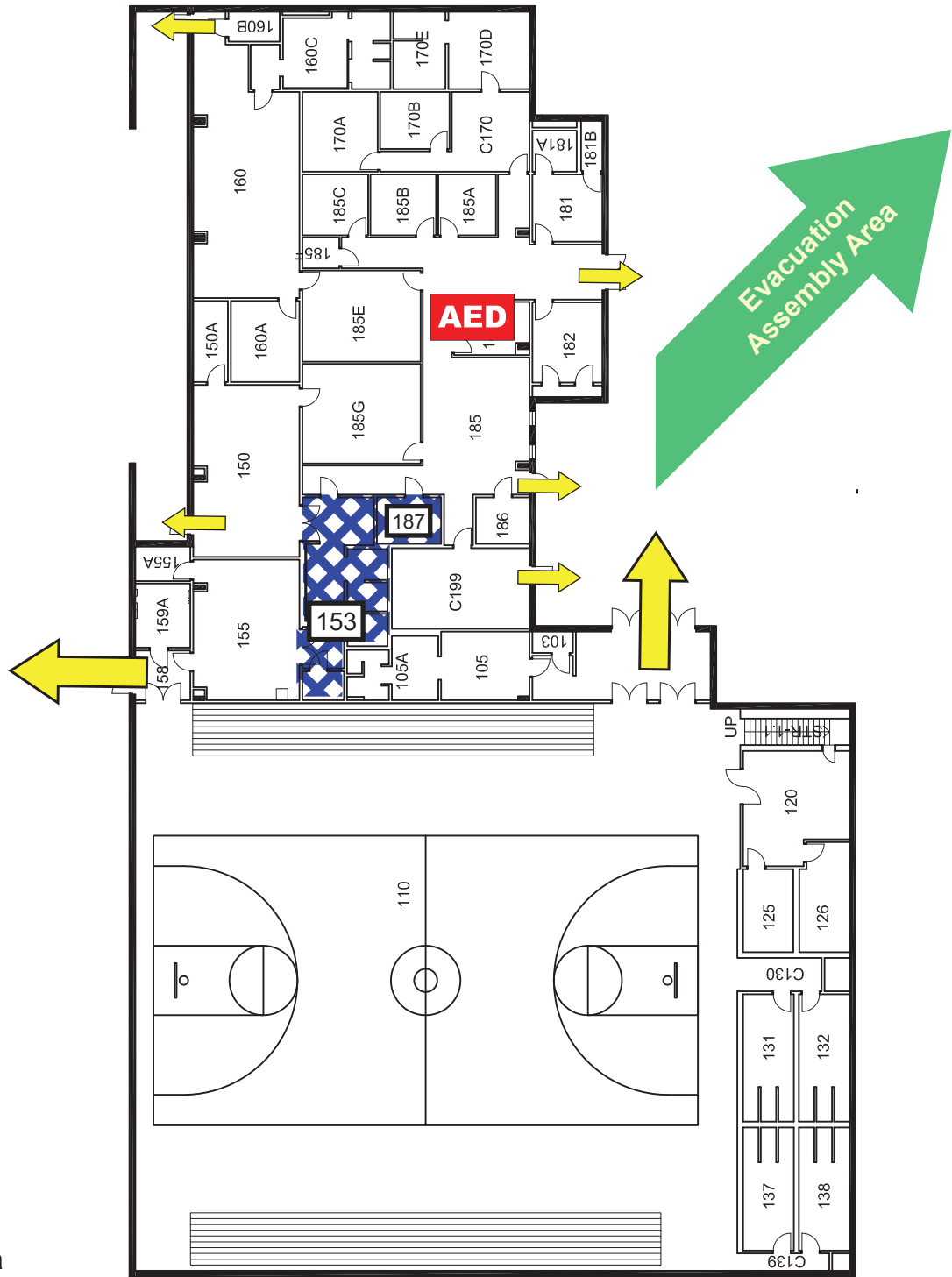


For more information on what to do in a specific emergency situation, refer to the UNT Emergency Guidelines on [www.emergency.unt.edu](http://www.emergency.unt.edu) or the Mean Green Ready app.

**Call 911 in an emergency!**

# OLYMPIC SPORTS COMPLEX

## FIRST FLOOR PLAN



### LEGEND

 Shelter Area

 Exit

 Automated External Defibrillator

