



# Emergency Procedures for Lovelace and McNatt Families Practice Facility

1307 South Bonnie Brae Street, Denton, TX 76207

## Shelter

You may need to take shelter for **severe weather** (most common) or a **hazardous materials release**.

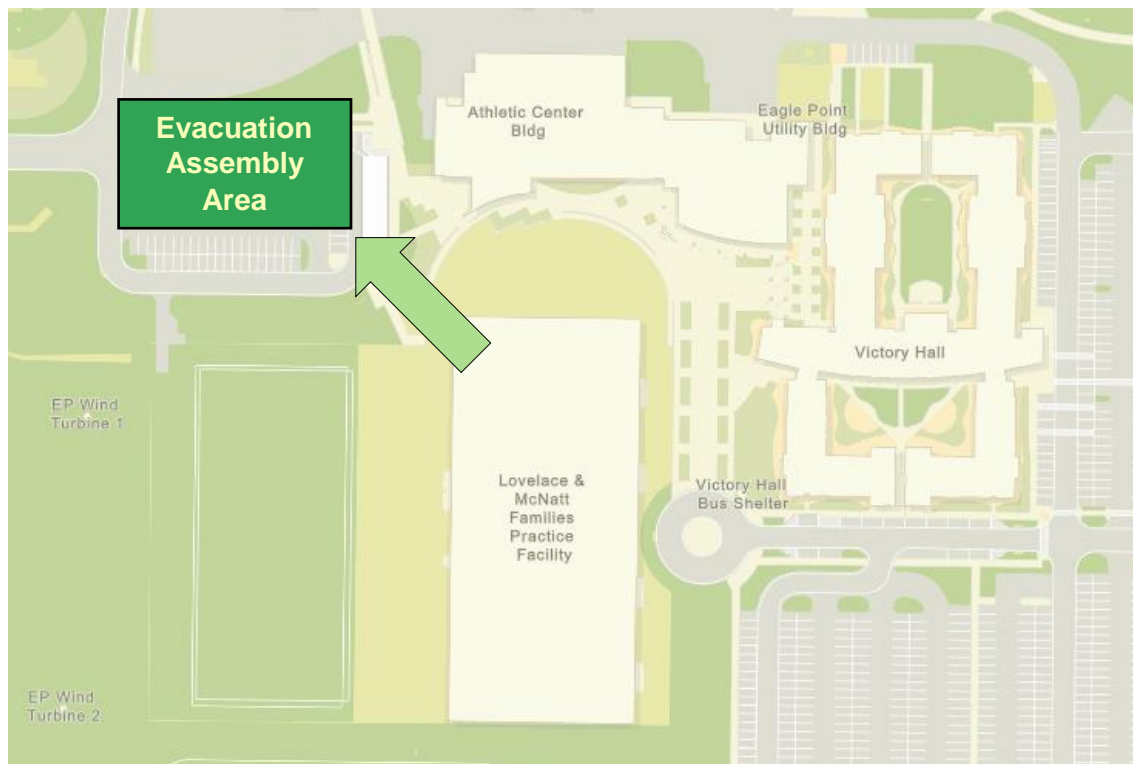
During an incident requiring individuals to take **shelter**, all building occupants should immediately move to the designated Tornado Shelter Areas in the building. If unable to safely move to the designated shelter area, seek shelter in a windowless interior room or hallway on the lowest floor of the building.

**All building occupants should take shelter in the First Floor Restrooms or—if time allows—move to shelters within the Athletic Center Building.**

## Evacuation

If you need to evacuate the building—for a fire, bomb threat, gas leak, or other event—all building occupants should immediately move to the nearest EXIT. Once outside, proceed to the designated Evacuation Assembly Area. If unable to safely move to the designated assembly area, contact one or more members of your department or unit to let them know where you are.

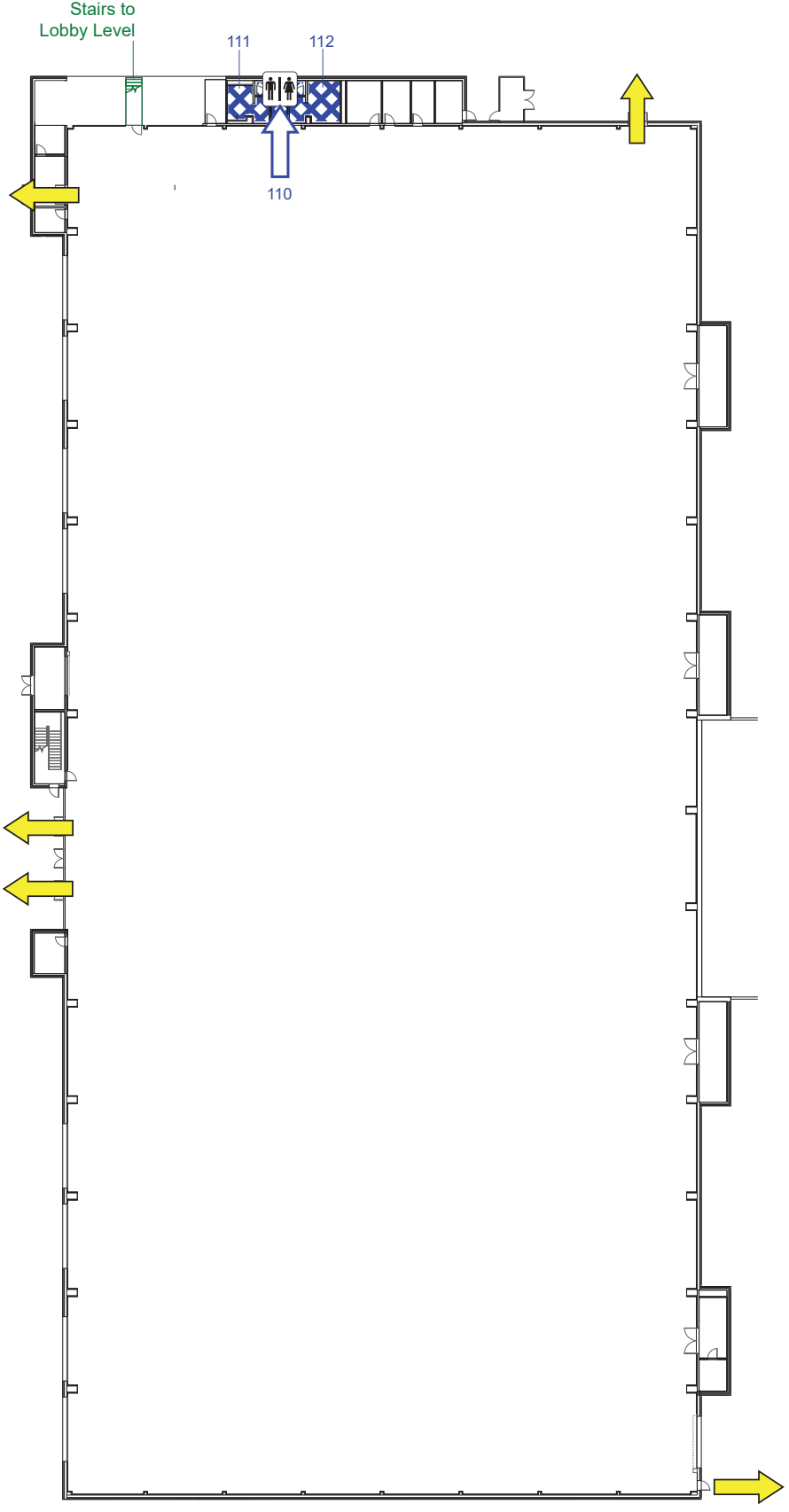
**All building occupants should immediately evacuate the building and proceed to Lot 83, northwest of the practice facility.**



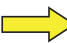
For more information on what to do in a specific emergency situation, refer to the UNT Emergency Guidelines on [www.emergency.unt.edu](http://www.emergency.unt.edu) or the Mean Green Ready app. **Call 911 in an emergency!**

# LOVELACE & McNATT FAMILIES PRACTICE FACILITY

## FIRST FLOOR PLAN



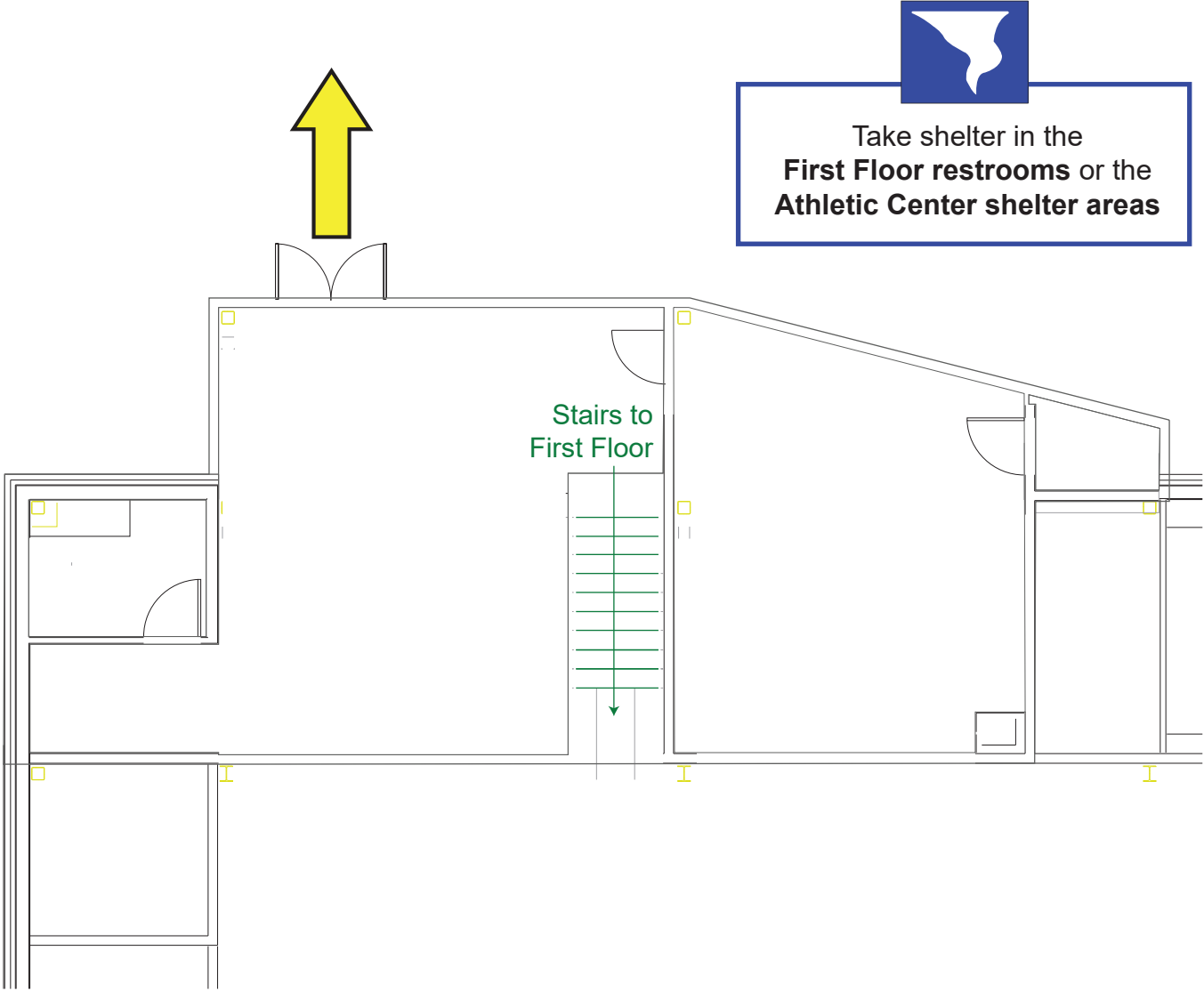
### LEGEND

-  Shelter Area
-  Exit



# LOVELACE & McNATT FAMILIES PRACTICE FACILITY

## LOBBY LEVEL FLOOR PLAN



### LEGEND

 Exit

