



Emergency Procedures

Kristin Farmer Autism Center

490 N Interstate 35, Denton, TX 76205

Shelter

You may need to take shelter for **severe weather** (most common) or a **hazardous materials release**.

During an incident requiring individuals to take **shelter**, all building occupants should immediately move to the designated Tornado Shelter Areas in the building. If unable to safely move to the designated shelter area, seek shelter in a windowless interior room or hallway on the lowest floor of the building.

All building occupants should take shelter in the most interior rooms in the building, 160, 170, 175, 180, 185, 156, 157, 142, 123B, 158, 105, and the restrooms. Avoid standing near windows, exterior walls, and doors made of glass.

Evacuation

If you need to evacuate the building—for a fire, bomb threat, gas leak, or other event—all building occupants should immediately move to the nearest EXIT. Once outside, proceed to the designated Evacuation Assembly Area. If unable to safely move to the designated assembly area, contact one or more members of your department or unit to let them know you are safe and your whereabouts.

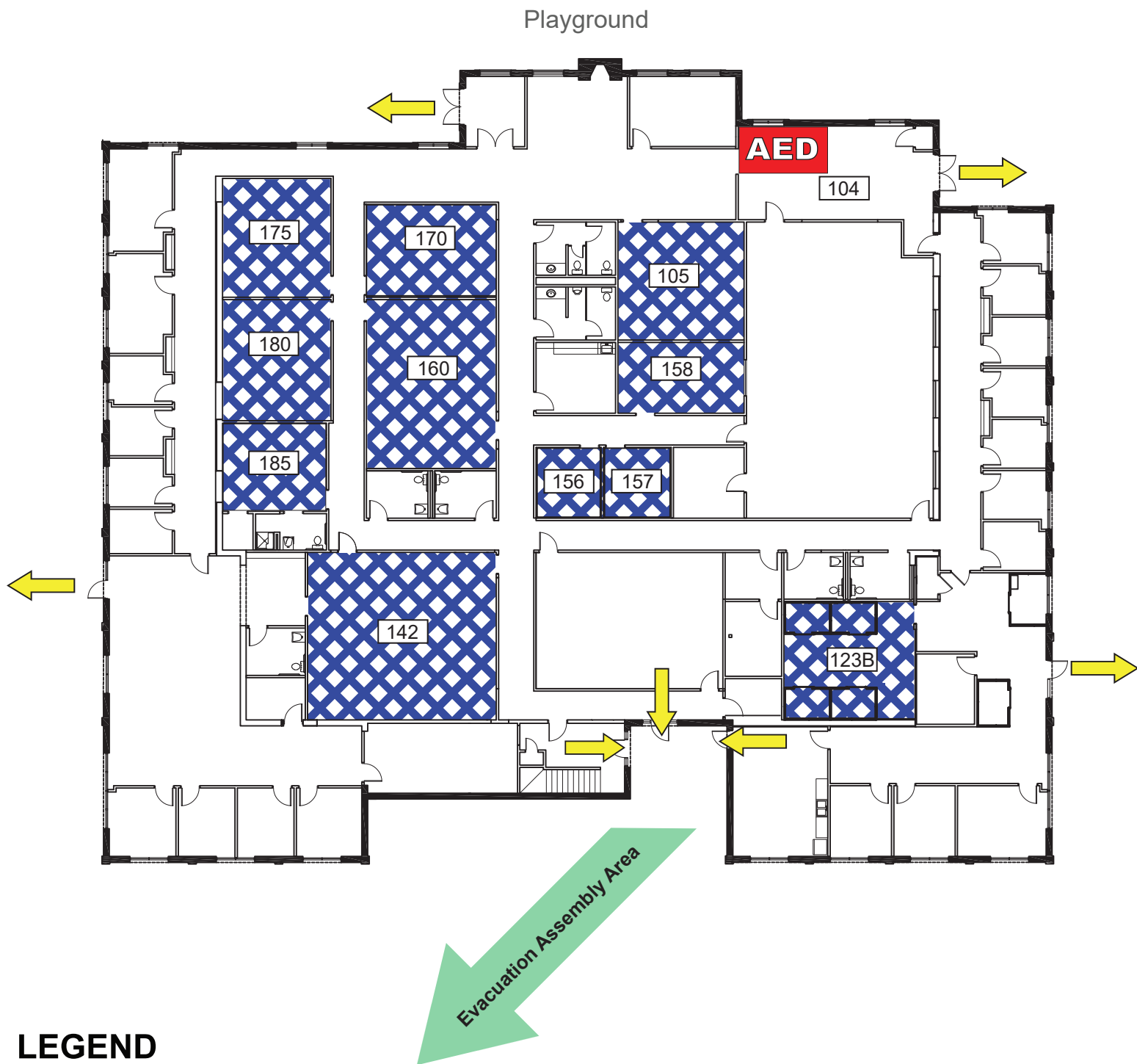
All building occupants should immediately evacuate the building and proceed to the southwest corner of the parking lot south of the building.



For more information on what to do in a specific emergency situation, refer to the UNT Emergency Guidelines on www.emergency.unt.edu or the Mean Green Ready app. **Call 911 in an emergency!**

KRISTIN FARMER AUTISM CENTER

FIRST FLOOR PLAN



LEGEND

 Shelter Area

 Exit

 AED Automated External Defibrillator

