



Emergency Procedures for 1003 Maple Street

Denton, TX 76201

Shelter

You may need to take shelter for **severe weather** (most common) or a **hazardous materials release**.

During an incident requiring individuals to take **shelter**, all building occupants should immediately move to the designated Tornado Shelter Areas in the building. If unable to safely move to the designated shelter area, seek shelter in a windowless interior room or hallway on the lowest floor of the building. **Avoid standing near windows, exterior walls, and doors made of glass.**

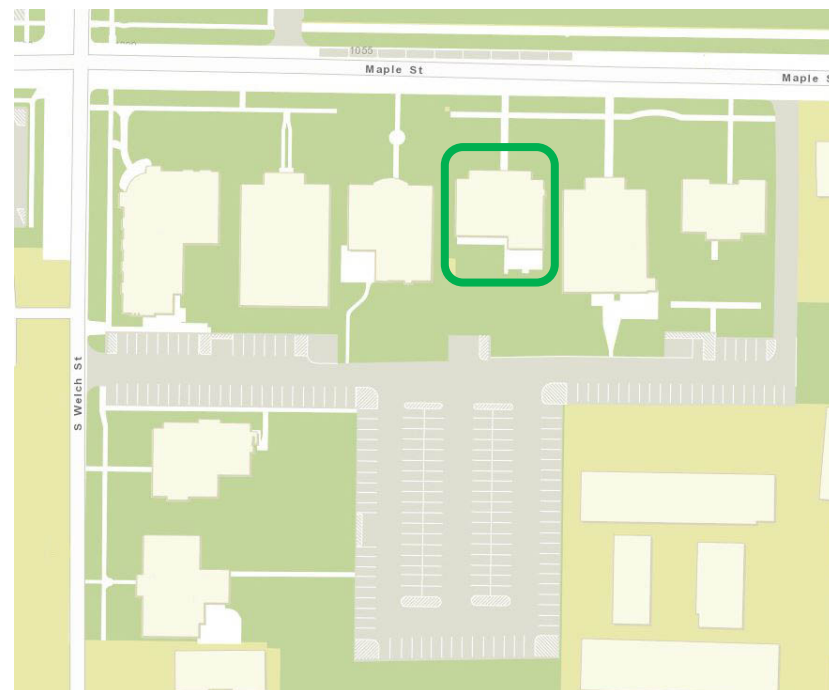
Evacuation

If you need to evacuate the building—for a fire, bomb threat, gas leak, or other event—all building occupants should immediately move to the nearest EXIT. Once outside, proceed to the designated Evacuation Assembly Area.

Persons with mobility impairments who are unable to safely exit the building should move to a **Fire Meeting Point** and await assistance from emergency responders.

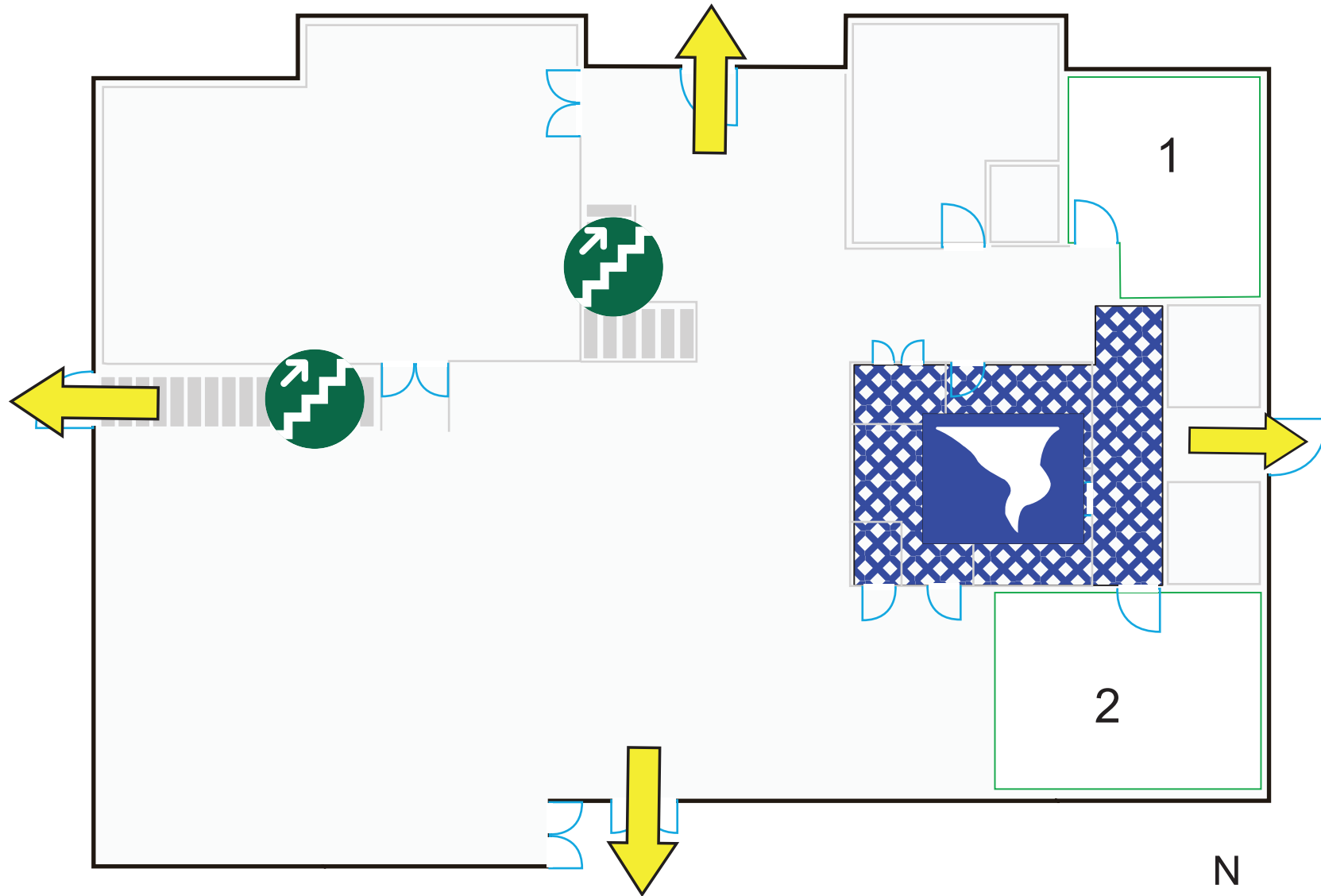
Residents and other building occupants should immediately evacuate the building and move to the front side of the house near the street.

For more information on what to do in a specific emergency situation, refer to the UNT Emergency Guidelines on www.emergency.unt.edu or the Mean Green Ready app. **Call 911 in an emergency!**



1003 MAPLE STREET

FIRST FLOOR PLAN



LEGEND



Shelter Area



Exit

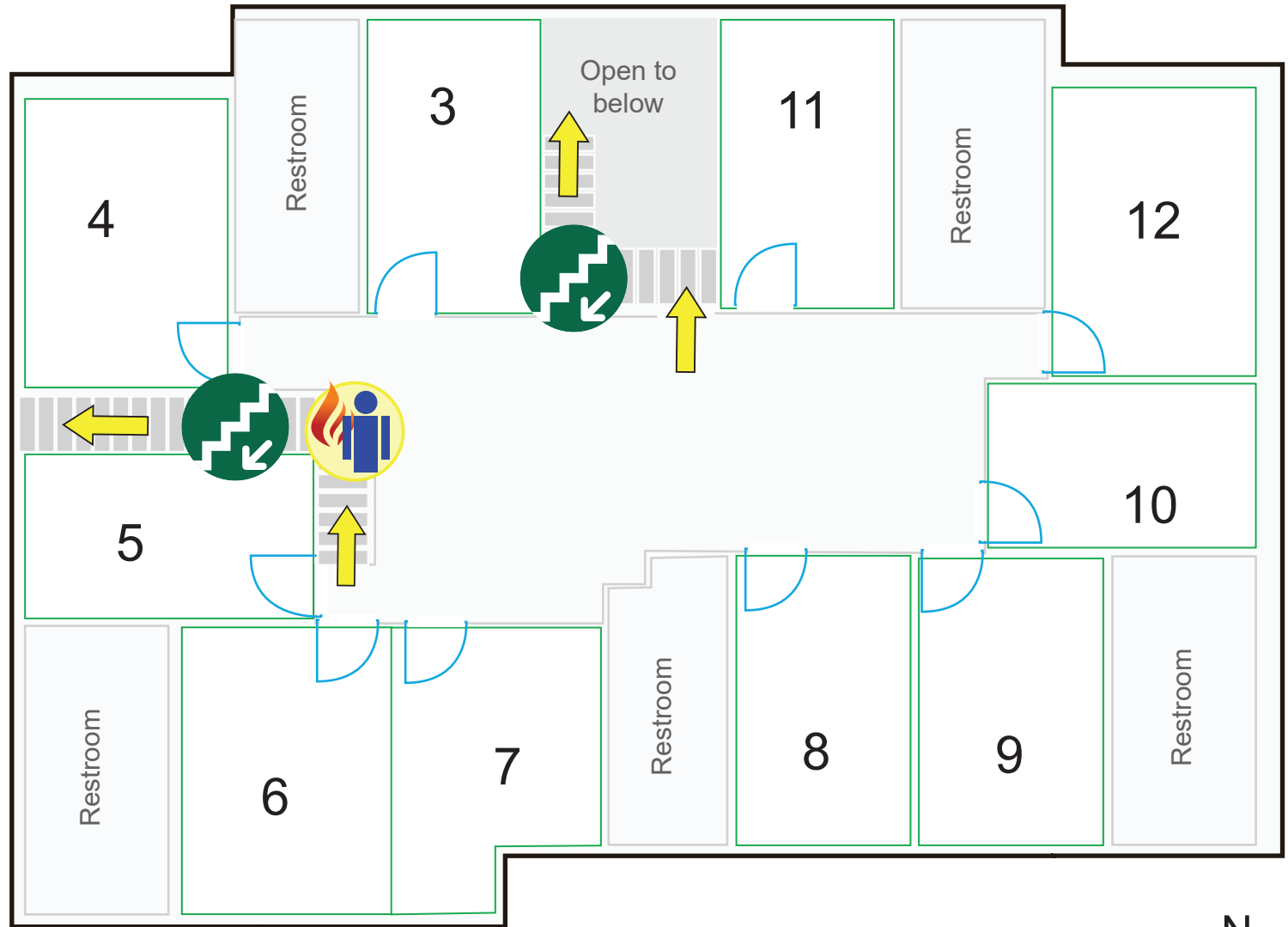


Stairs

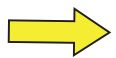


1003 MAPLE STREET

SECOND FLOOR PLAN



LEGEND



Exit



Stairs



Fire Meeting Point*

* A Fire Meeting Point is a designated space to wait for first responders during a fire or building evacuation for those with access and/or functional needs who are unable to get down to the first floor.

