



Emergency Procedures for Mean Green Village Building G Ernie Kuenhe Basketball Practice Facility

1532 S. Bonnie Brae St., Denton, TX 76207

Shelter

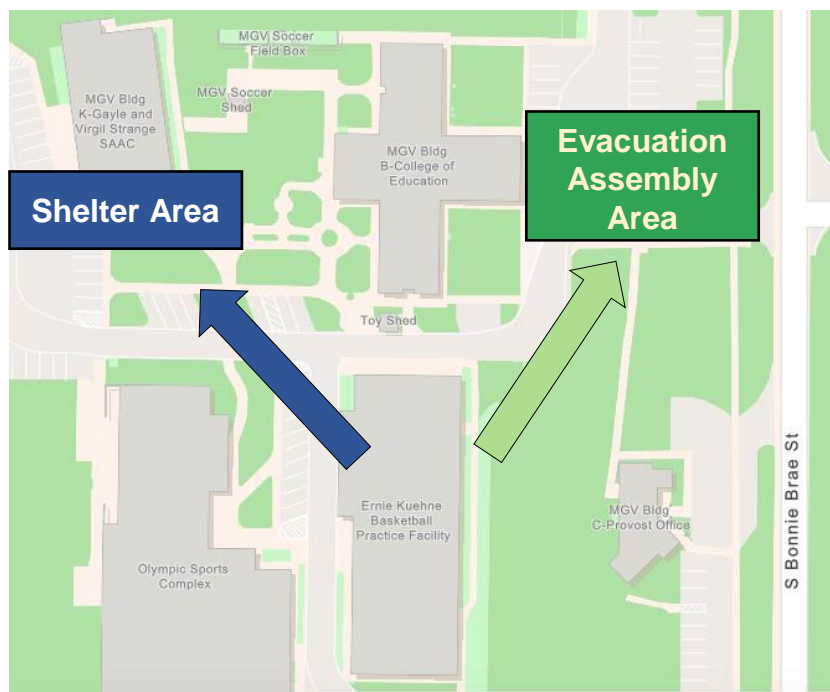
You may need to take shelter for severe weather (most common) or a hazardous materials release.

During an incident requiring individuals to take shelter, all building occupants should immediately move to the designated Tornado Shelter Areas in the building. If unable to safely move to the designated shelter area, seek shelter in a windowless interior room or hallway on the lowest floor of the building.

All building occupants should take shelter in the main interior hallway of the Student Athlete Academic Center. Avoid standing near windows, exterior walls, and doors made of glass.

Evacuation

If you need to evacuate the building—for a fire, bomb threat, gas leak, or other event—all building occupants should immediately move to the nearest EXIT. Once outside, proceed to the designated Evacuation Assembly Area: **Parking Lot 72 north of the Basketball Practice Facility.** If unable to safely move to the designated assembly area, contact one or more members of your department or unit to let them know you are safe and your whereabouts.

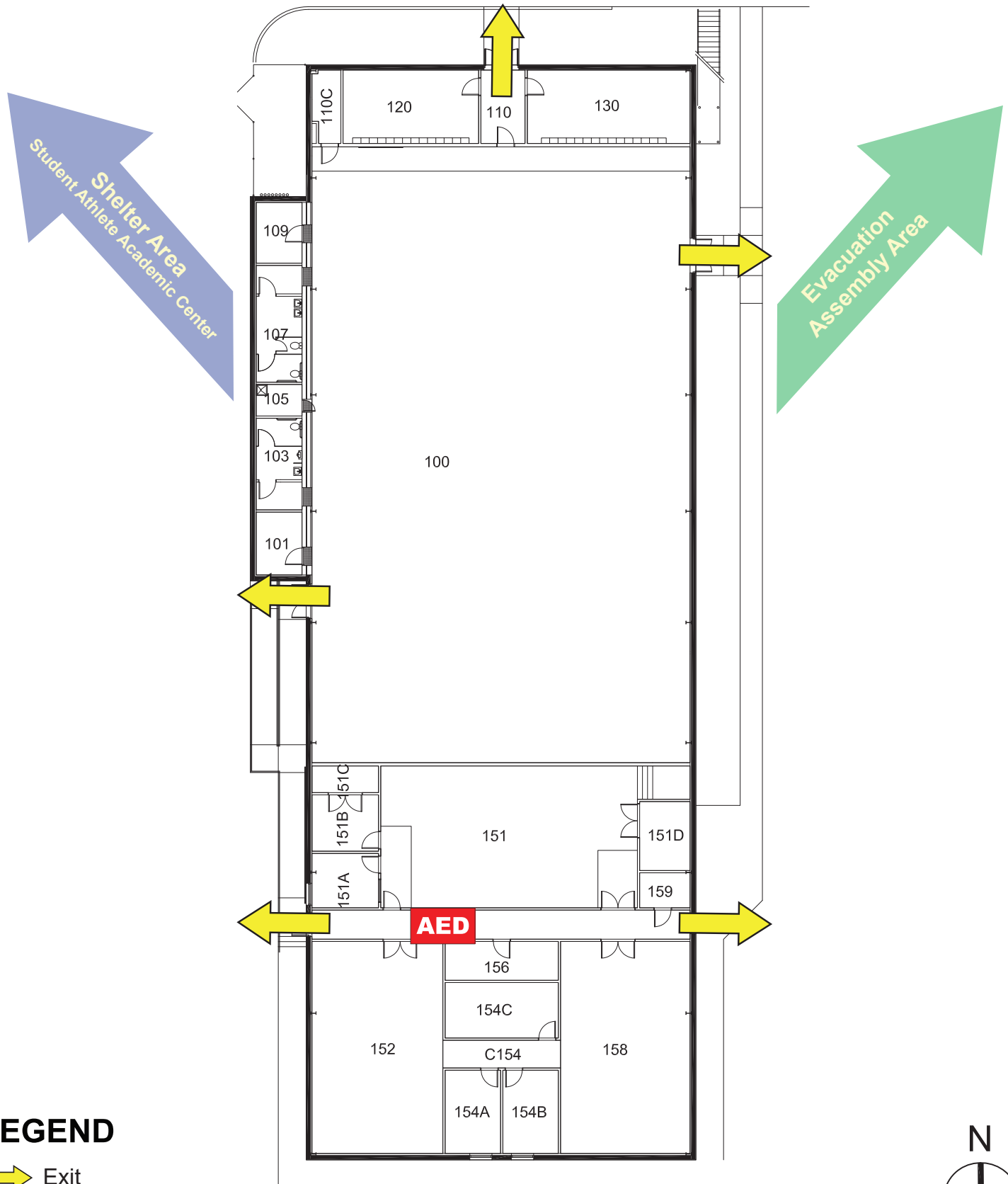


For more information on what to do in a specific emergency situation, refer to the UNT Emergency Guidelines on www.emergency.unt.edu or the Mean Green Ready app. Call 911 in an emergency!

ERNIE KUEHNE

BASKETBALL PRACTICE FACILITY

FIRST FLOOR PLAN



LEGEND

 Exit

 Automated External Defibrillator

