



Emergency Procedures for the Alumni Pavilion

2323 I-35E, Denton, TX 76207

Shelter

You may need to take shelter for **severe weather** (most common) or a **hazardous materials release**.

During an incident requiring individuals to take **shelter**, all building occupants should immediately move to the designated shelter areas in the building. If unable to safely move to the designated shelter area, seek shelter in a windowless interior room or hallway on the lowest floor of the building.

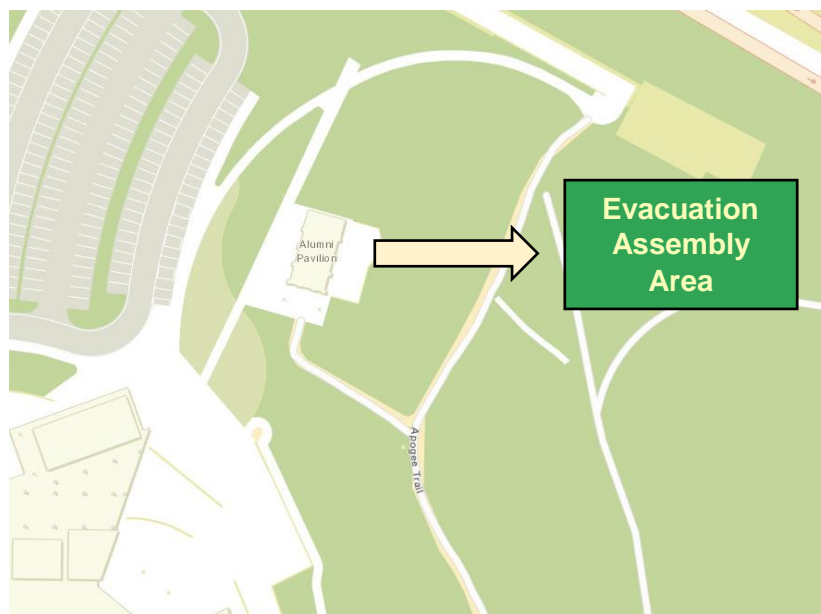
All building occupants should take shelter the Alumni Pavilion restrooms. Avoid standing near windows, exterior walls, and doors made of glass.

Evacuation

If you need to evacuate the building—for a fire, bomb threat, gas leak, or other event—all building occupants should immediately move to the nearest EXIT. Once outside, proceed to the designated Evacuation Assembly Area. If unable to safely move to the designated assembly area, contact someone to let them know you are safe and your whereabouts.

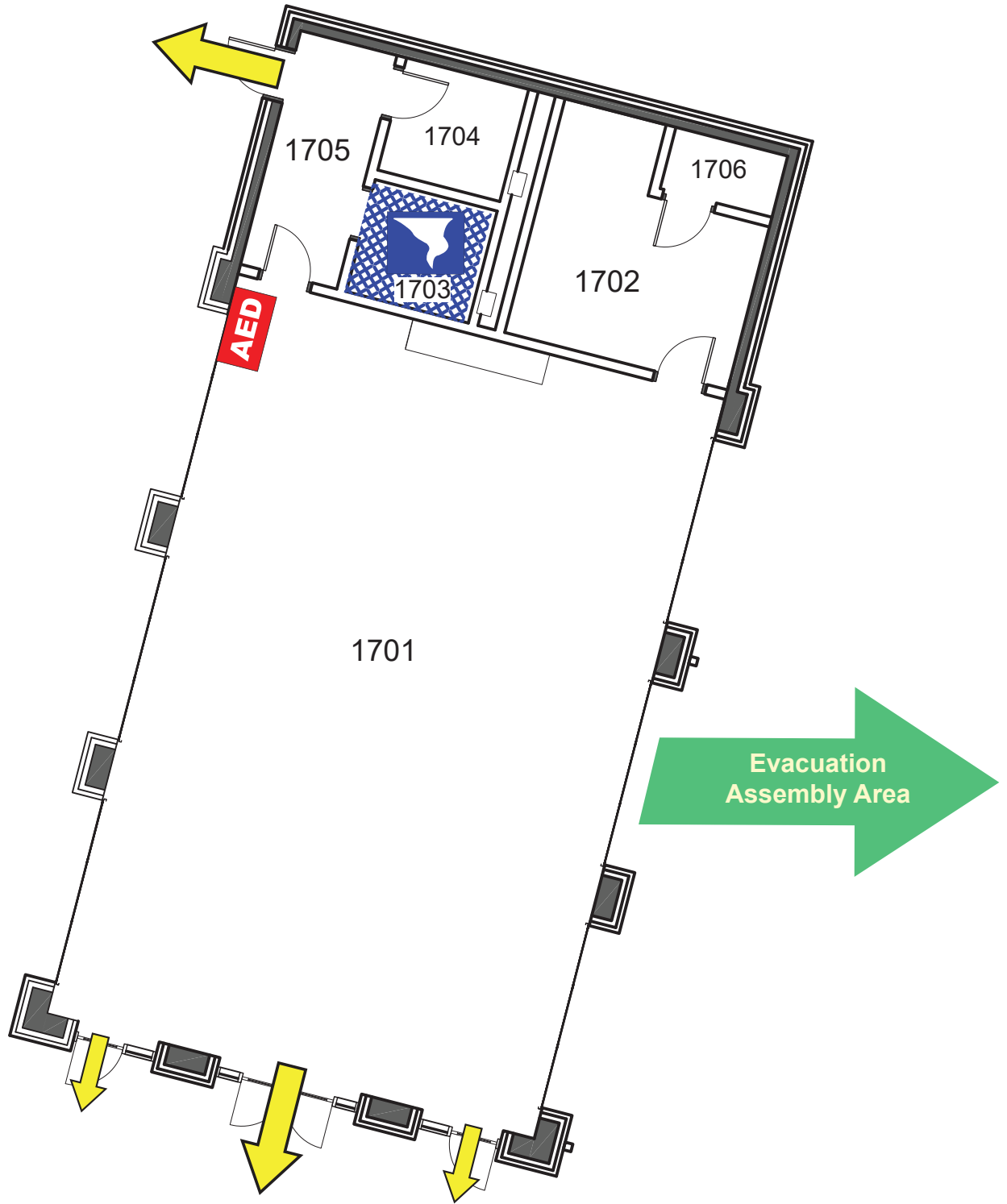
During an evacuation, all building occupants should immediately move to the grassy area to the east of the building. Do not reenter the building until given an all-clear from first responders.

For more information on what to do in a specific emergency situation, refer to the UNT Emergency Guidelines on www.emergency.unt.edu or the Mean Green Ready app. **Call 911 in an emergency!**



ALUMNI PAVILION

FIRST FLOOR PLAN



LEGEND

 Shelter Area

 Exit

 AED Automated External Defibrillator

