



# Emergency Procedures for Air Force ROTC Building

712 North Texas Blvd., Denton, TX 76201

## Shelter

You may need to take shelter for **severe weather** (most common) or a **hazardous materials release**.

During an incident requiring individuals to take **shelter**, all building occupants should immediately move to the designated Tornado Shelter Areas in the building. If unable to safely move to the designated shelter area, seek shelter in a windowless interior room or hallway on the lowest floor of the building.

**All building occupants should take shelter in rooms 104, 106, 109, or 112. Avoid standing near windows, exterior walls, and doors made of glass.**

## Evacuation

If you need to evacuate the building—for a fire, bomb threat, gas leak, or other event—all building occupants should immediately move to the nearest EXIT. Once outside, proceed to the designated Evacuation Assembly Area. If unable to safely move to the designated assembly area, contact one or more members of your department or unit to let them know where you are.

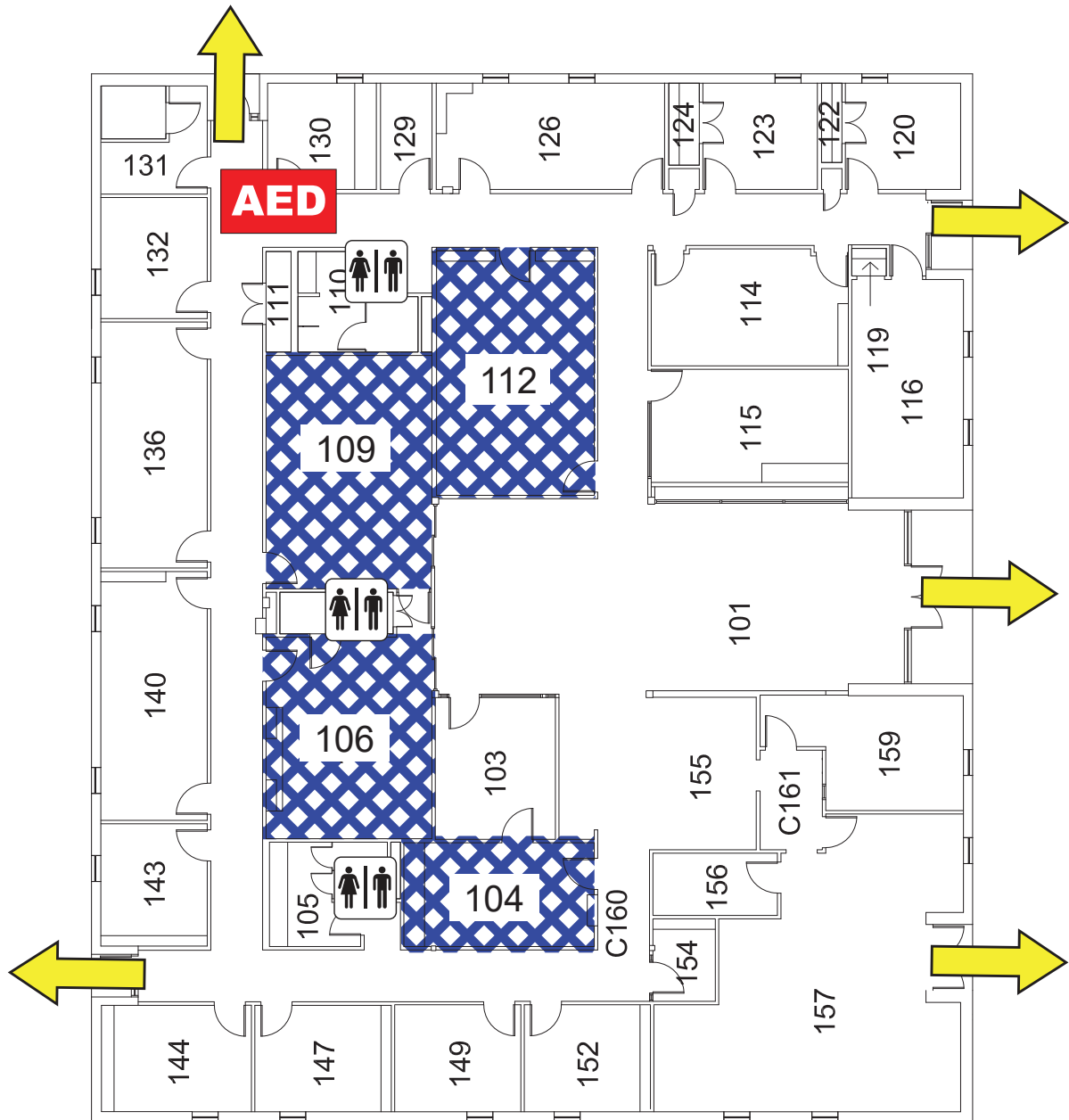
**All building occupants should immediately evacuate the building and proceed to Parking Lot 20, east of the Air Force ROTC building. Be cautious of vehicle traffic when moving to the evacuation assembly area.**



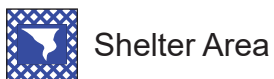
For more information on what to do in a specific emergency situation, refer to the UNT Emergency Guidelines on [www.emergency.unt.edu](http://www.emergency.unt.edu) or the Mean Green Ready app. **Call 911 in an emergency!**

# AIR FORCE ROTC

## FIRST FLOOR PLAN



### LEGEND



Shelter Area



Exit



Automated External Defibrillator



Restrooms

