



Emergency Procedures for Athletic Center Building

1301 S. Bonnie Brae St., Denton, TX 76207

Shelter

You may need to take shelter for **severe weather** (most common) or a **hazardous materials release**.

During an incident requiring individuals to take **shelter**, all building occupants should immediately move to the designated Tornado Shelter Areas in the building. If unable to safely move to the designated shelter area, seek shelter in a windowless interior room or hallway on the lowest floor of the building.

All building occupants should take shelter in the football locker room located in the basement or in room 156. Avoid standing near windows, exterior walls, and doors made of glass.

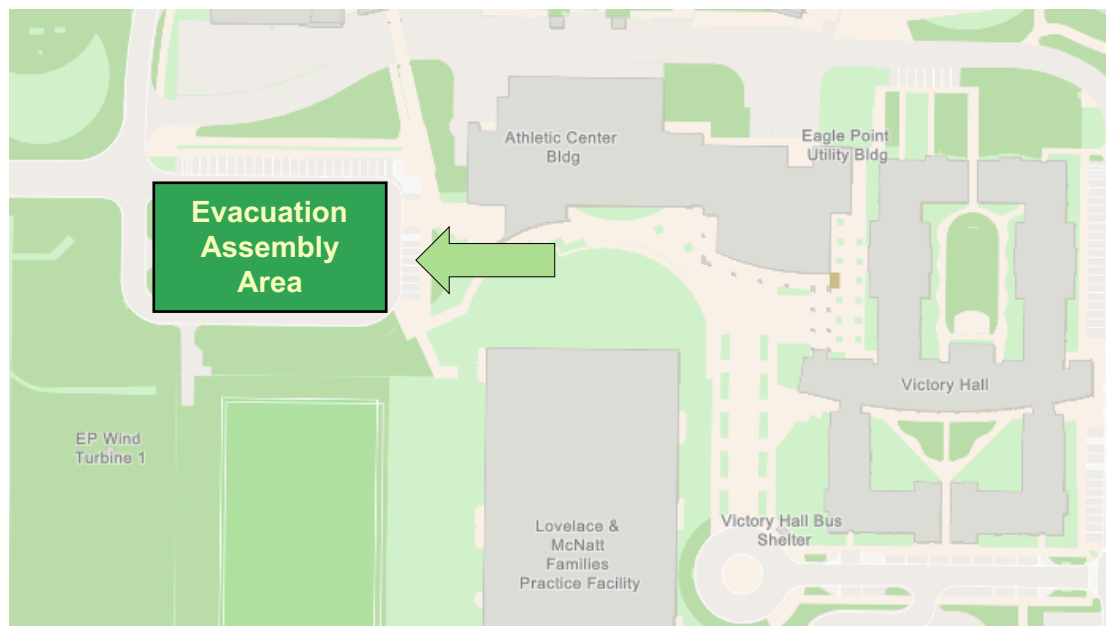
Evacuation

If you need to evacuate the building—for a fire, bomb threat, gas leak, or other event—all building occupants should immediately move to the nearest EXIT. Once outside, proceed to the designated Evacuation Assembly Area. If unable to safely move to the designated assembly area, contact one or more members of your department or unit to let them know you are safe and your whereabouts.

Persons with mobility impairments who are unable to safely exit the building should be moved to a designated **Area of Refuge** (also called a **Fire Refuge Area**) and await assistance from emergency responders.

All building occupants should immediately evacuate the building and congregate to Parking Lot 83 west of the Athletic Center.

For more information on what to do in a specific emergency situation, refer to the UNT Emergency Guidelines on www.emergency.unt.edu or the Mean Green Ready app. **Call 911 in an emergency!**




ATHLETIC CENTER


BLDG #0320


05-2017

Exterior Gross Area
36911

Safety Legend

 Areas of Refuge

 Tornado Shelter Areas

 Exit/Evacuation Routes

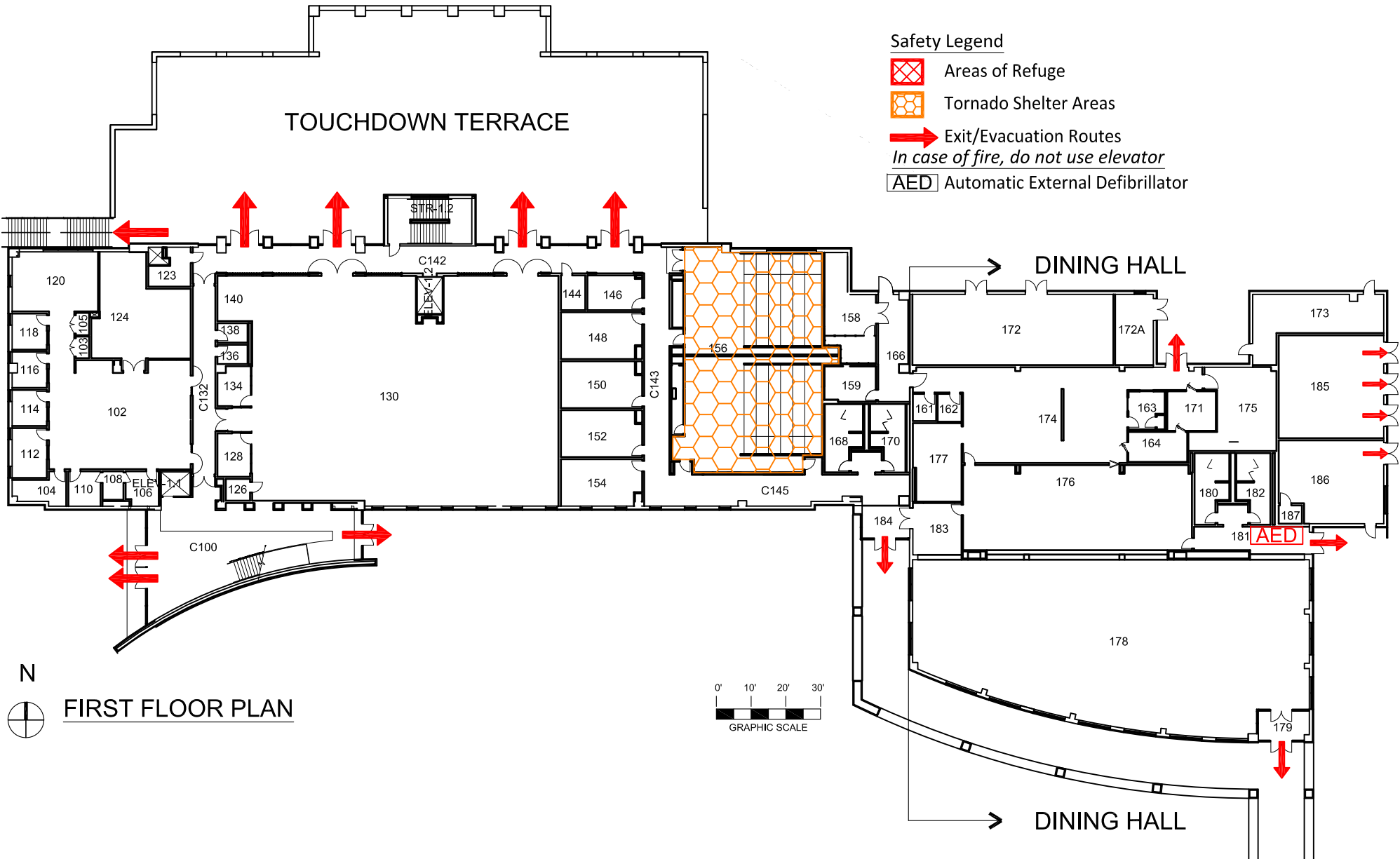
In case of fire, do not use elevator

 Automatic External Defibrillator

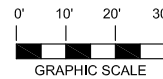
TOUCHDOWN TERRACE

DINING HALL

DINING HALL



FIRST FLOOR PLAN



ATHLETIC CENTER

BLDG #0320

08-2005

Exterior Gross Area
13611

Safety Legend



Areas of Refuge



Tornado Shelter Areas

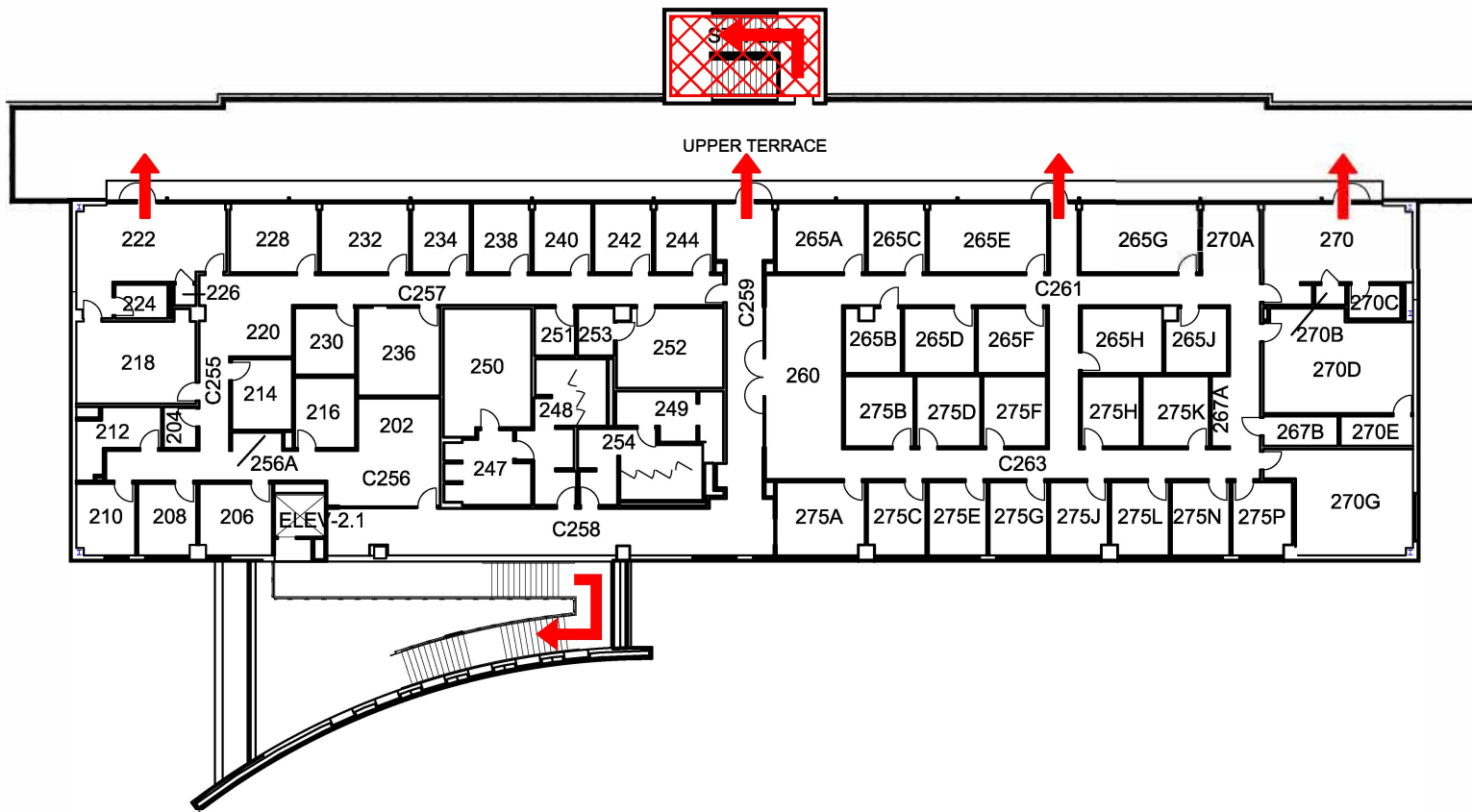


Exit/Evacuation Routes

In case of fire, do not use elevator



AED Automatic External Defibrillator



SECOND FLOOR PLAN

