



# Emergency Procedures for Alpha Phi

905 W. Prairie St., Denton, TX 76201

## Shelter

You may need to take shelter for **severe weather** (most common) or a **hazardous materials release**.

During an incident requiring individuals to take **shelter**, all building occupants should immediately move to the designated Tornado Shelter Areas in the building. If unable to safely move to the designated shelter area, seek shelter in a windowless interior room or hallway on the lowest floor of the building.

**Residents and other building occupants should take shelter on the first floor in the west end of the building. Avoid standing near windows, exterior walls, and doors made of glass.**

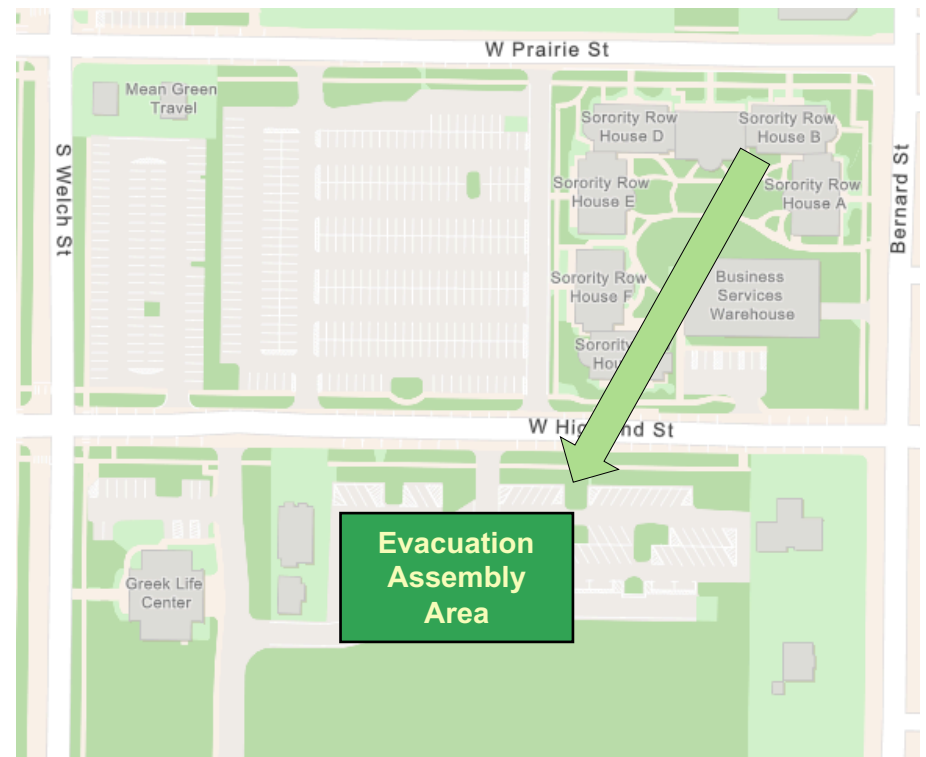
## Evacuation

If you need to evacuate the building—for a fire, bomb threat, gas leak, or other event—all building occupants should immediately move to the nearest EXIT. Once outside, proceed to the designated Evacuation Assembly Area.

Persons with mobility impairments who are unable to safely exit the building should be moved to a designated **Area of Refuge** (also called a **Fire Refuge Area**) and await assistance from emergency responders.

**Residents and other building occupants should immediately evacuate the building and proceed to Parking Lot 40 east of the Greek Life Center.**

For more information on what to do in a specific emergency situation, refer to the UNT Emergency Guidelines on [www.emergency.unt.edu](http://www.emergency.unt.edu) or the Mean Green Ready app. **Call 911 in an emergency!**



# SORORITY HOUSE B

BUILDING # 0351

05-2019

## Safety Legend



Areas of Refuge



Tornado Shelter Areas



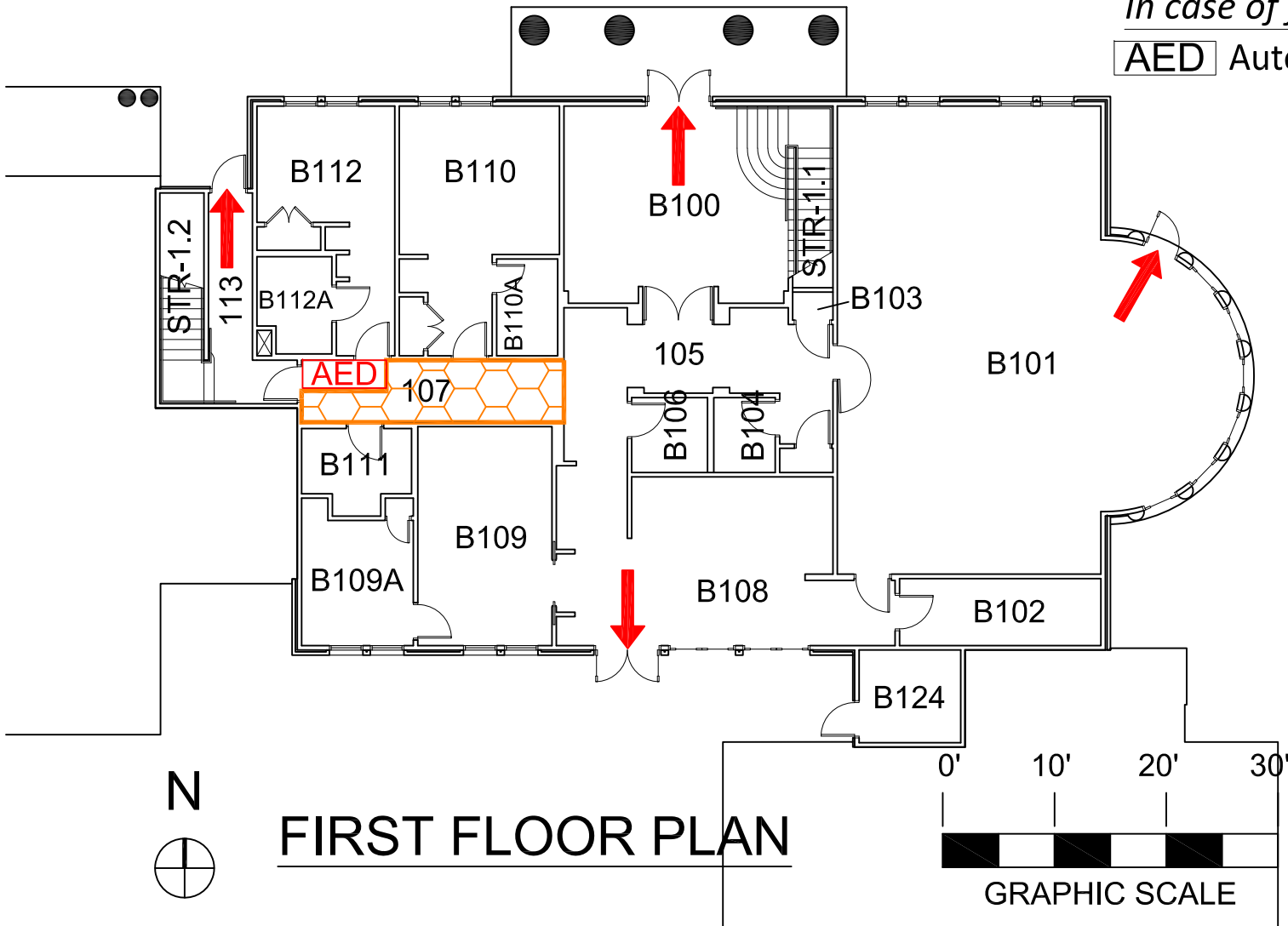
Exit/Evacuation Routes

*In case of fire, do not use elevator*



AED Automatic External Defibrillator

Exterior Gross Area  
4270



# SORORITY HOUSE B

BUILDING # 0351

05-2019

Exterior Gross Area  
3921

## Safety Legend



Areas of Refuge



Tornado Shelter Areas



Exit/Evacuation Routes

*In case of fire, do not use elevator*



AED Automatic External Defibrillator

