

Emergency Evacuation Procedures

Pohl Recreation Center

Page Navigation

- [Severe Weather](#)
 - [Bomb Threat/Fire](#)
 - [Building Evacuation Maps](#)
-

Severe Weather

In the event of severe weather, all building occupants should immediately seek shelter in the designated shelter-in-place area in the building. If unable to safely move to the designated shelter-in-place area, seek shelter in a windowless interior room or hallway on the lowest floor of the building.

First Floor: All faculty Staff and others shall immediately proceed to the locker rooms

Second Floor: All faculty Staff and others shall immediately proceed to the interior rest rooms

Bomb Threat/Fire

In the event of a bomb threat or fire in the building, all building occupants should immediately evacuate the building using the nearest exit. Once outside, proceed to the designated assembly area. If unable to safely move to the designated assembly area, contact one or more members of your department or unit to let them know you are safe and inform them of your whereabouts.

Persons with mobility impairments who are unable to safely exit the building should move to a designated area of refuge and await assistance from emergency responders.

All faculty, staff and others shall immediately proceed to parking lot 4 located next to Chilton Hall.

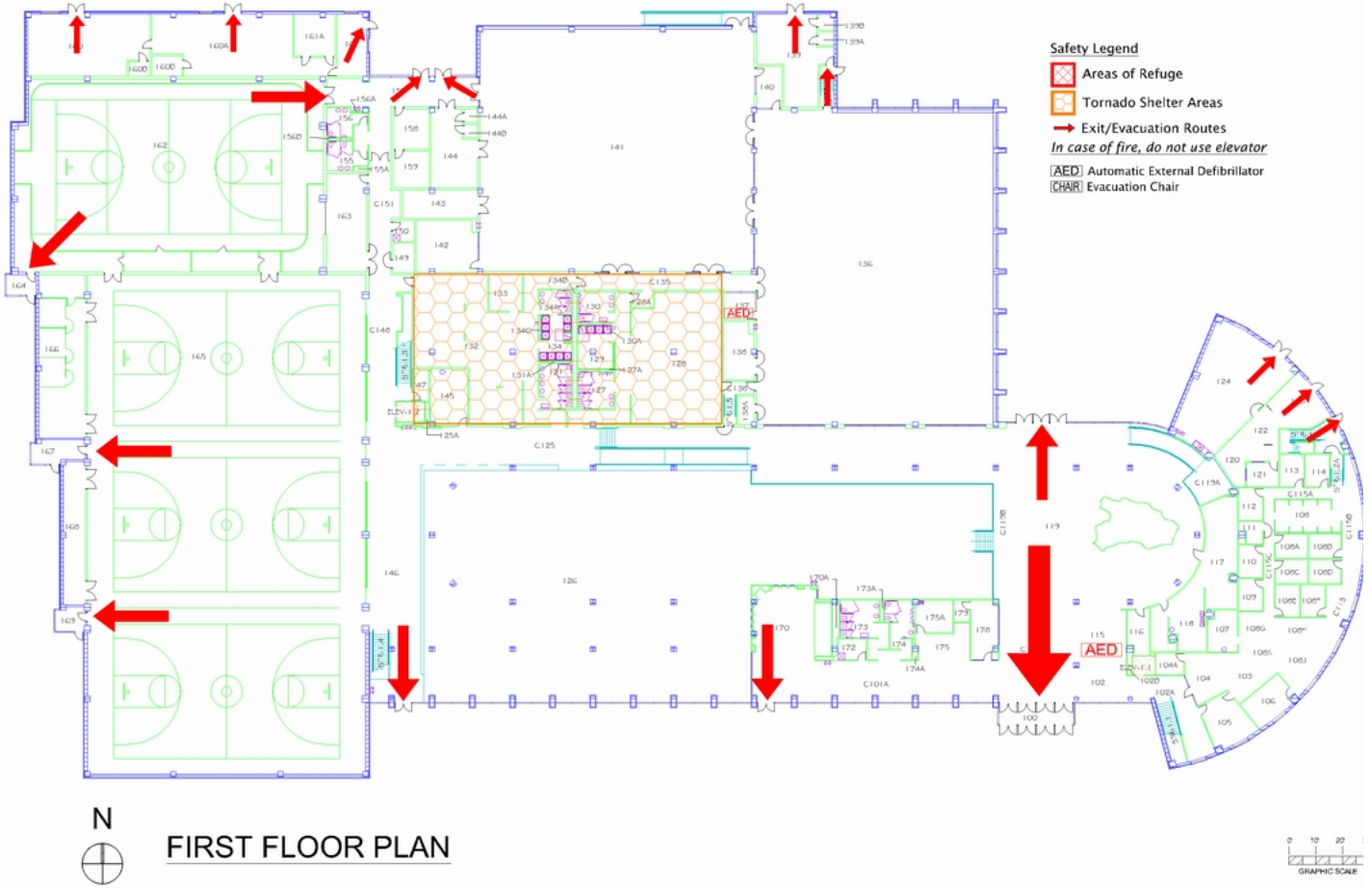
Building Evacuation Maps

[Print Full Size Map](#)

POHL RECREATION CENTER

BUILDING #0118
12-2008

Exterior Gross Area
107771



[Print Full Size Map](#)






POHL RECREATIONAL CENTER

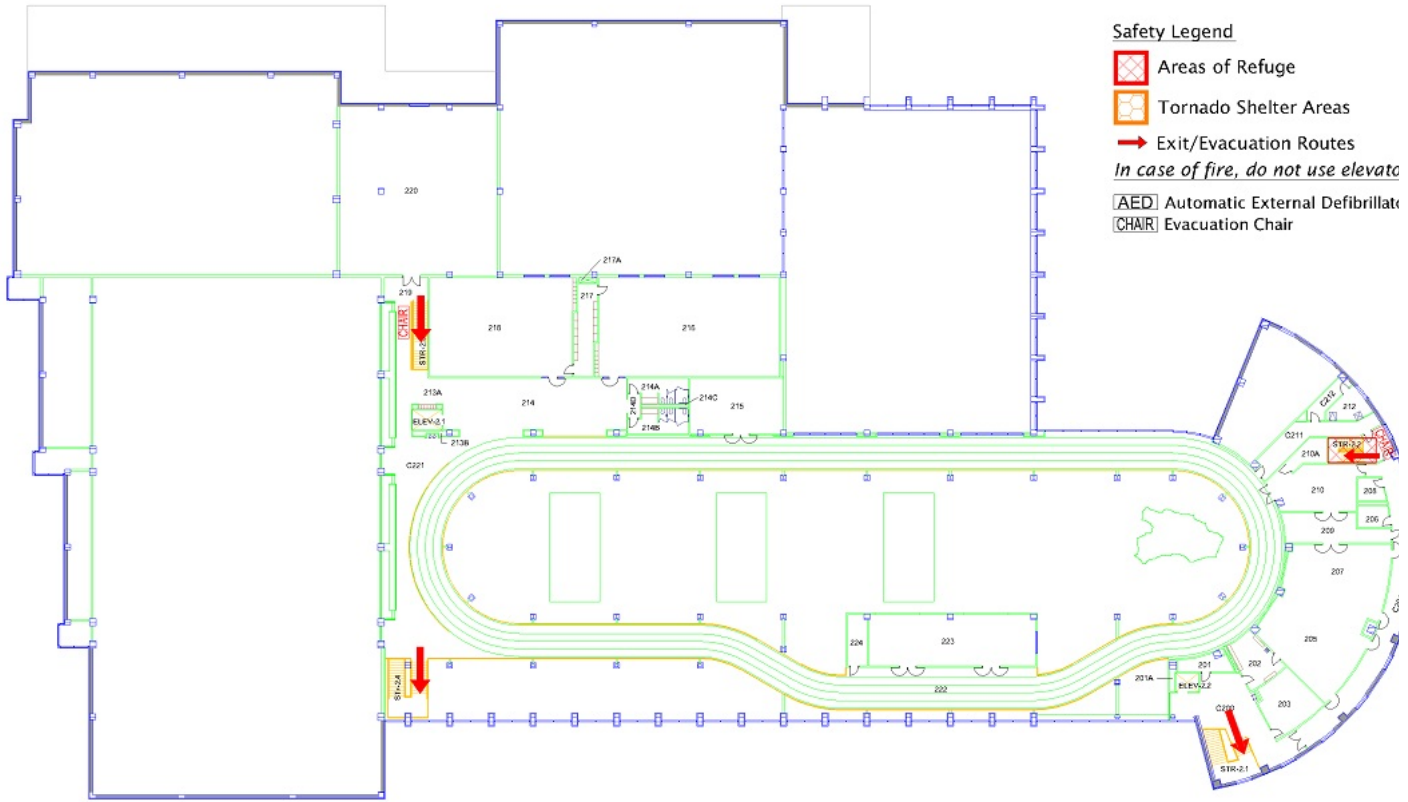
BUILDING #0118

09-2006

Exterior Gross Area
31033

Safety Legend

-  Areas of Refuge
-  Tornado Shelter Areas
-  Exit/Evacuation Routes
In case of fire, do not use elevators
-  AED Automatic External Defibrillator
-  CHAIR Evacuation Chair



N
 **SECOND FLOOR PLAN**