

Emergency Evacuation Procedures

Music Practice South

Page Navigation

- [Severe Weather](#)
 - [Bomb Threat/Fire](#)
 - [Building Evacuation Maps](#)
-

Severe Weather

In the event of severe weather, all building occupants should immediately seek shelter in the designated shelter-in-place area in the building. If unable to safely move to the designated shelter-in-place area, seek shelter in a windowless interior room or hallway on the lowest floor of the building.

All staff and others will proceed to the Men's and Women's restrooms on the first floor.

Bomb Threat/Fire

In the event of a bomb threat or fire in the building, all building occupants should immediately evacuate the building using the nearest exit. Once outside, proceed to the designated assembly area. If unable to safely move to the designated assembly area, contact one or more members of your department or unit to let them know you are safe and inform them of your whereabouts.

Persons with mobility impairments who are unable to safely exit the building should move to a designated area of refuge and await assistance from emergency responders.

All exits are clearly marked and all staff and others will immediately evacuate the building and proceed to the west section of parking lot 26 west of the Music Practice South building. Once you leave the building, do not re-enter for any reason.

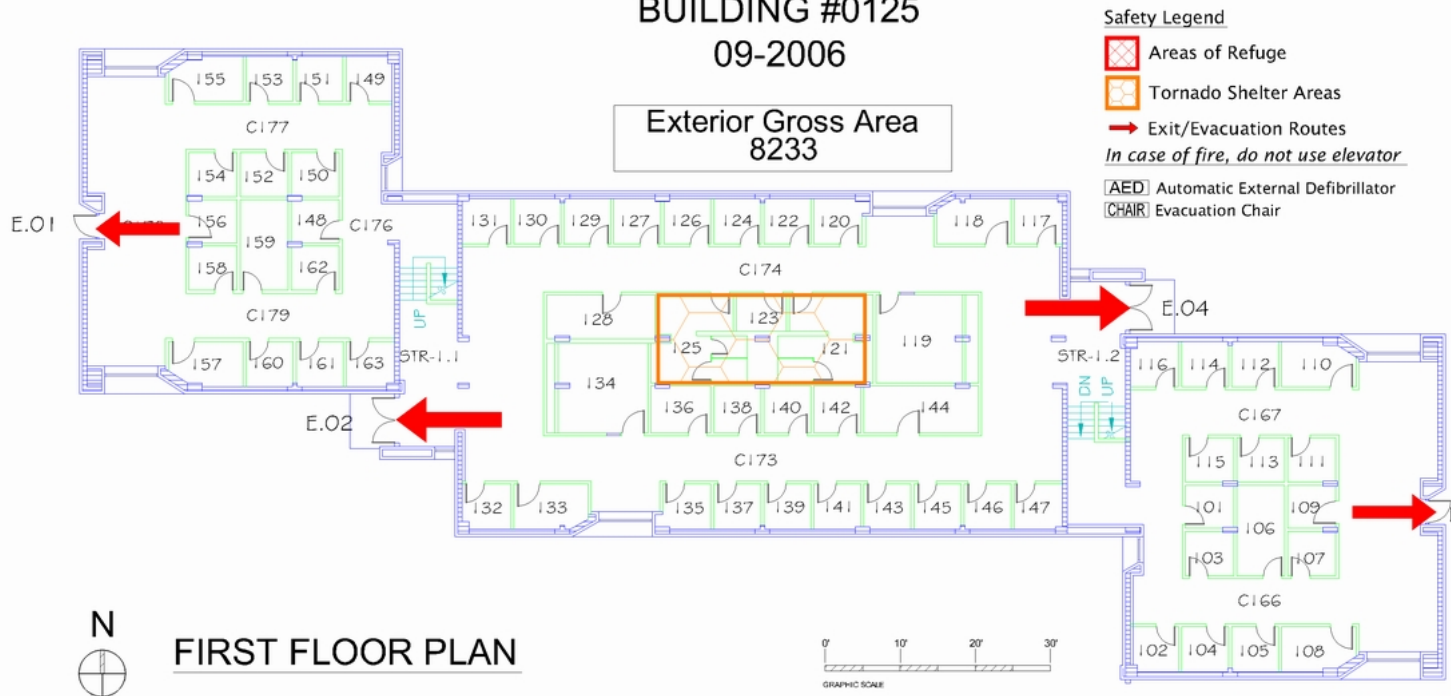
Building Evacuation Maps

[Print Full Size Map](#)

MUSIC PRACTICE SOUTH

BUILDING #0125

09-2006



[Print Full Size Map](#)


MUSIC PRACTICE SOUTH


BUILDING #0125


09-2006

Exterior Gross Area
8298

Safety Legend

 Areas of Refuge

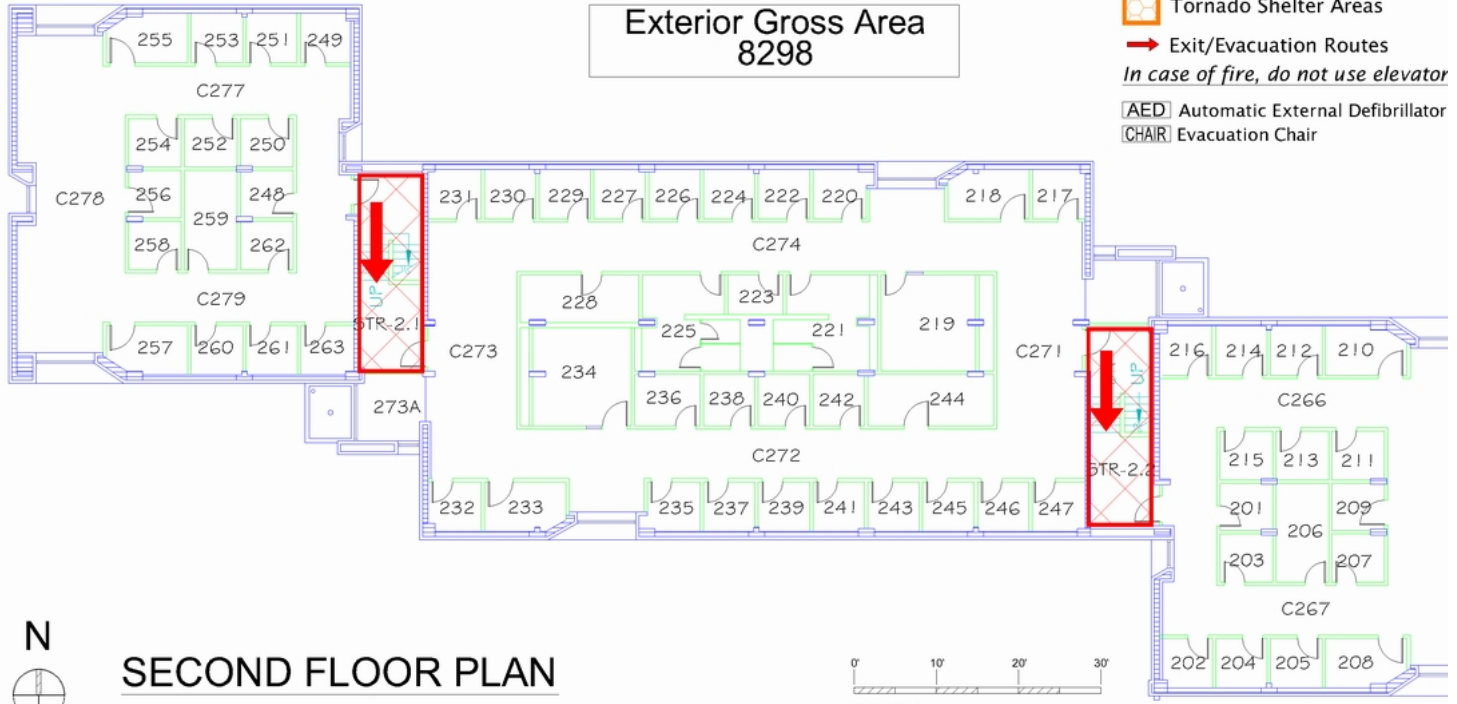
 Tornado Shelter Areas

 Exit/Evacuation Routes

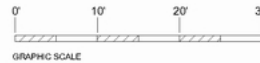
In case of fire, do not use elevator

[AED] Automatic External Defibrillator

[CHAIR] Evacuation Chair



SECOND FLOOR PLAN








[Print Full Size Map](#)

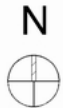
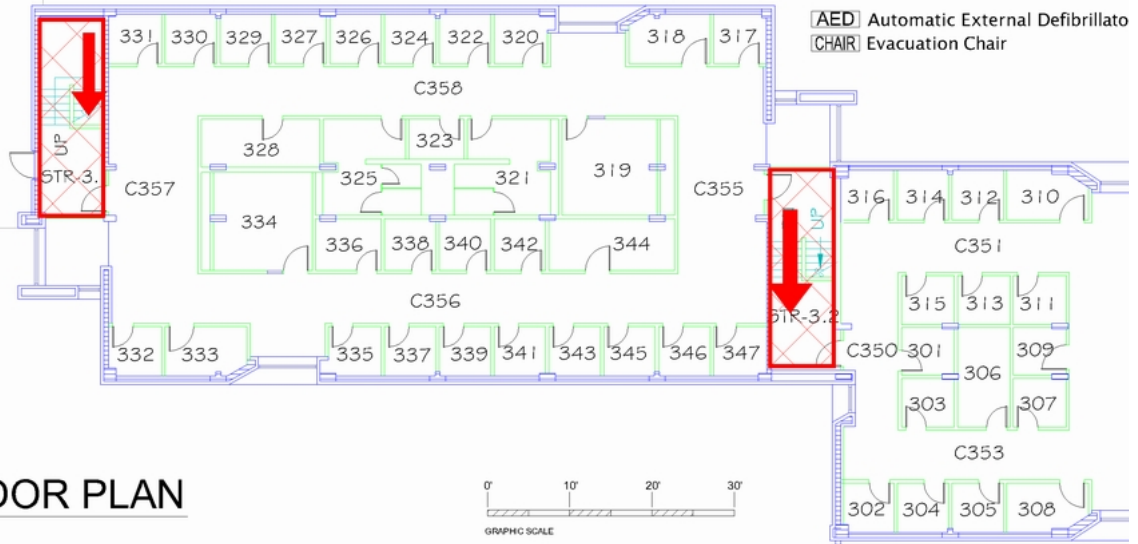
MUSIC PRACTICE SOUTH BUILDING #0125 09-2006

Exterior Gross Area
6304

Safety Legend

-  Areas of Refuge
-  Tornado Shelter Areas
-  Exit/Evacuation Routes
- In case of fire, do not use elevators*
-  AED Automatic External Defibrillator
-  CHAIR Evacuation Chair

ROOF
BELOW



THIRD FLOOR PLAN

