

Emergency Evacuation Procedures

Curry Hall

Severe Weather

In the event of severe weather, all building occupants should immediately seek shelter in the designated shelter-in-place area in the building. If unable to safely move to the designated shelter-in-place area, seek shelter in a windowless interior room or hallway on the lowest floor of the building.

All building occupants should take shelter the main hallways of the first and second floors.

Bomb Threat/Fire

In the event of a bomb threat or fire in the building, all building occupants should immediately evacuate the building using the nearest exit. Once outside, proceed to the designated assembly area. If unable to safely move to the designated assembly area, contact one or more members of your department or unit to let them know you are safe and inform them of your whereabouts.

Persons with mobility impairments who are unable to safely exit the building should move to a designated area of refuge and await assistance from emergency responders.






All building occupants should immediately evacuate the building and proceed to the lawn south of Hickory Hall.

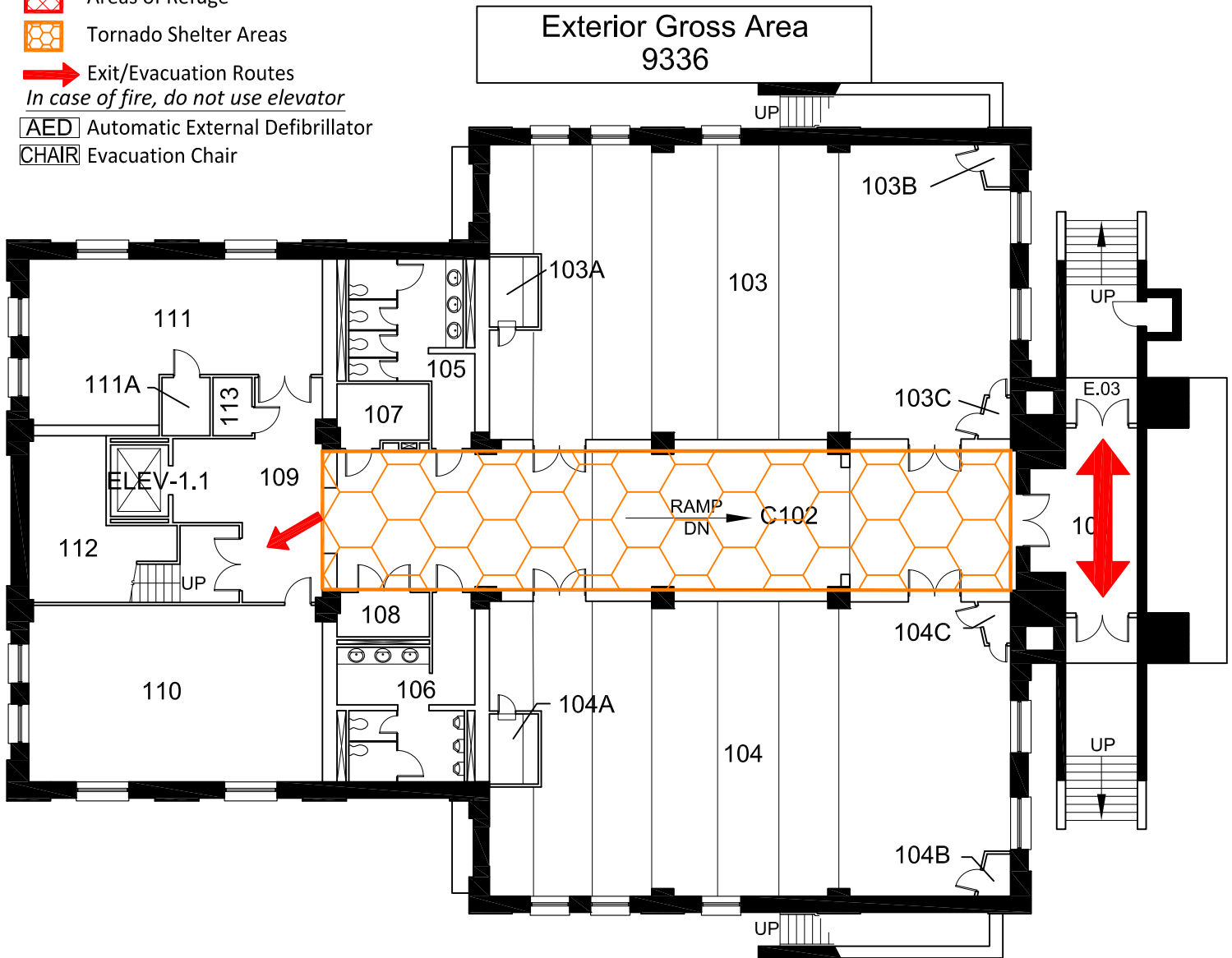
CURRY HALL

BLDG #0107

04-2007

Safety Legend

-  Areas of Refuge
-  Tornado Shelter Areas
-  Exit/Evacuation Routes
In case of fire, do not use elevator
-  AED Automatic External Defibrillator
-  CHAIR Evacuation Chair



FIRST FLOOR PLAN





CURRY HALL


BLDG #0107

06-2007


Safety Legend


 Areas of Refuge

 Tornado Shelter Areas

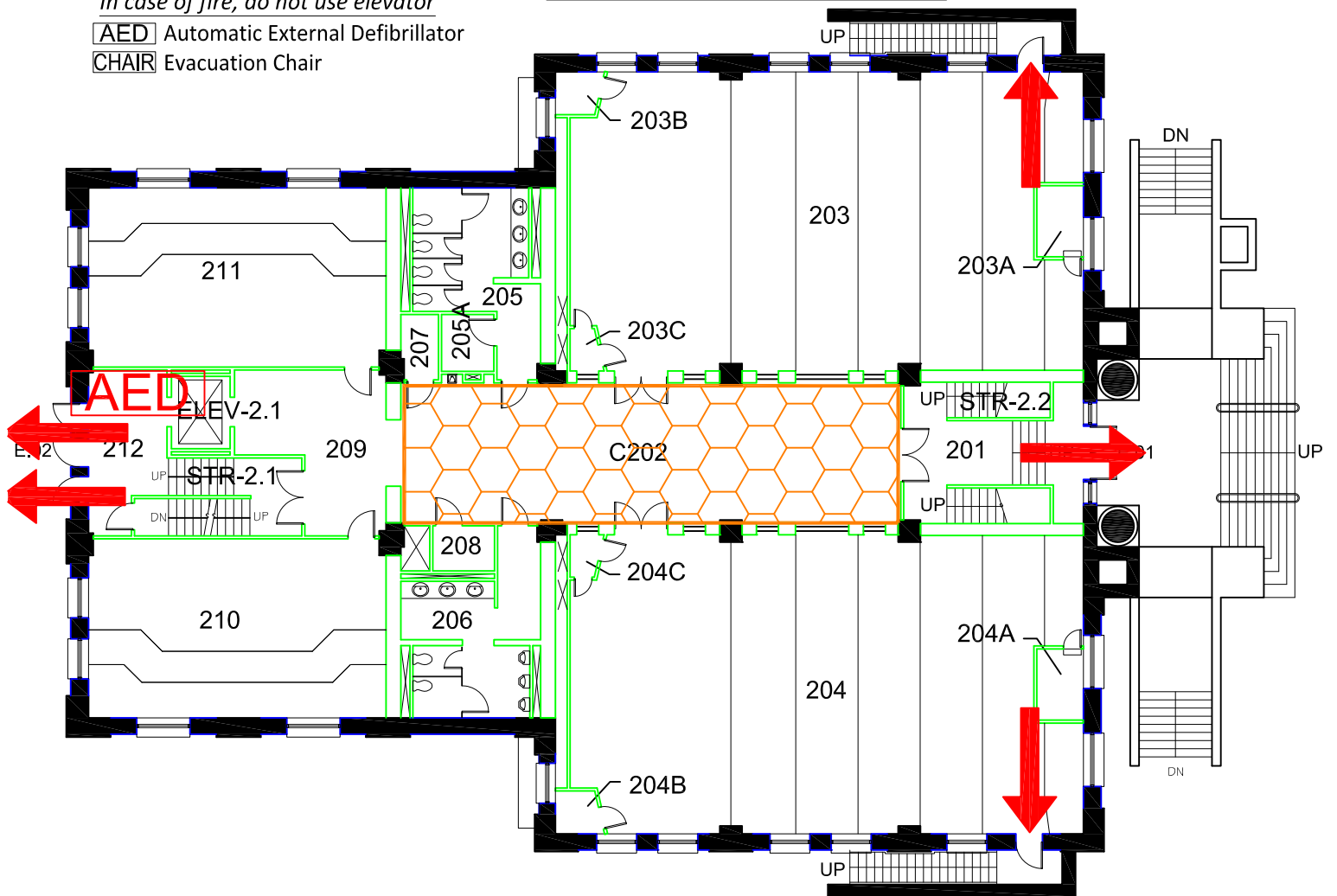
 Exit/Evacuation Routes

In case of fire, do not use elevator

 AED Automatic External Defibrillator

 CHAIR Evacuation Chair

Exterior Gross Area
9035



SECOND FLOOR PLAN





GRAPHIC SCALE


CURRY HALL


BLDG #0107


11-2011

Safety Legend

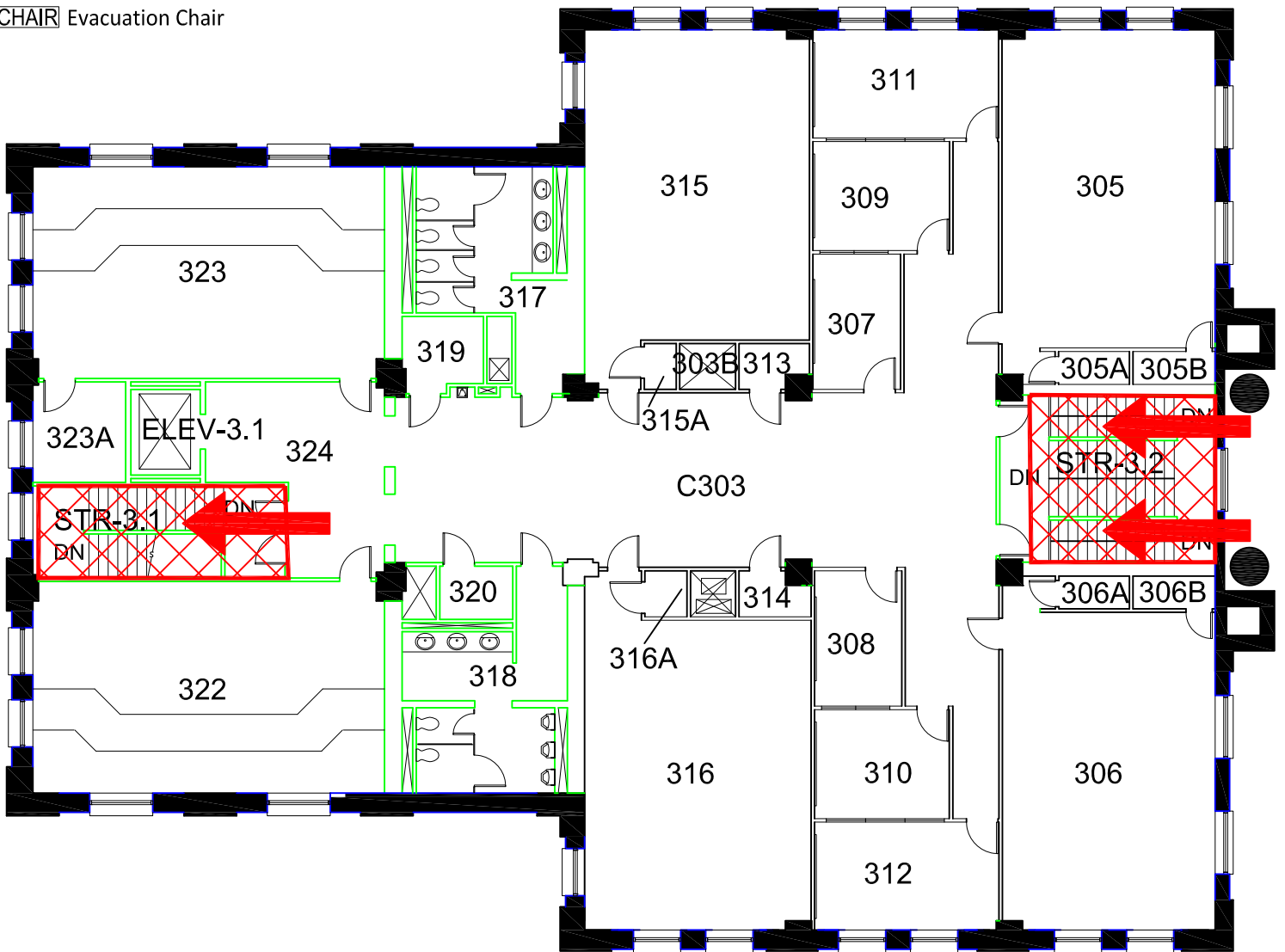
-  Areas of Refuge
-  Tornado Shelter Areas

 Exit/Evacuation Routes
In case of fire, do not use elevator

 AED Automatic External Defibrillator

 CHAIR Evacuation Chair

Exterior Gross Area
9036



THIRD FLOOR PLAN

