

Emergency Evacuation Procedures

Bain Hall

Severe Weather

In the event of severe weather, all building occupants should immediately seek shelter in the designated shelter-in-place area in the building. If unable to safely move to the designated shelter-in-place area, seek shelter in a windowless interior room or hallway on the lowest floor of the building.

All building occupants should take shelter in the interior hallways on the first floor of the building.

Bomb Threat/Fire

In the event of a bomb threat or fire in the building, all building occupants should immediately evacuate the building using the nearest exit. Once outside, proceed to the designated assembly area. If unable to safely move to the designated assembly area, contact one or more members of your department or unit to let them know you are safe and inform them of your whereabouts.

Persons with mobility impairments who are unable to safely exit the building should move to a designated area of refuge and await assistance from emergency responders.

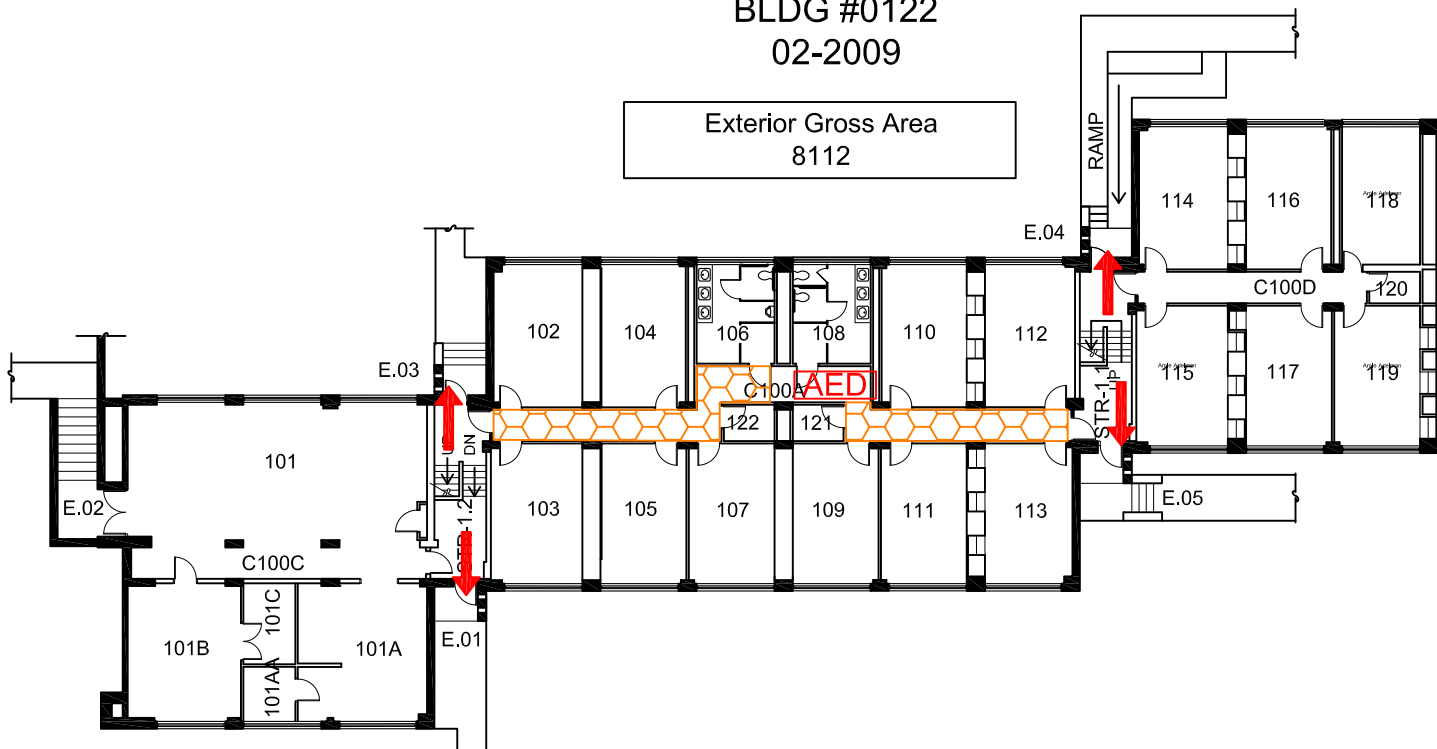
All building occupants should immediately evacuate the building and proceed to the north end of parking lot 26.

BAIN HALL

BLDG #0122


02-2009


Exterior Gross Area
8112




FIRST FLOOR PLAN


Safety Legend

 Areas of Refuge

 Tornado Shelter Areas

 Exit/Evacuation Routes

In case of fire, do not use elevator

 Automatic External Defibrillator

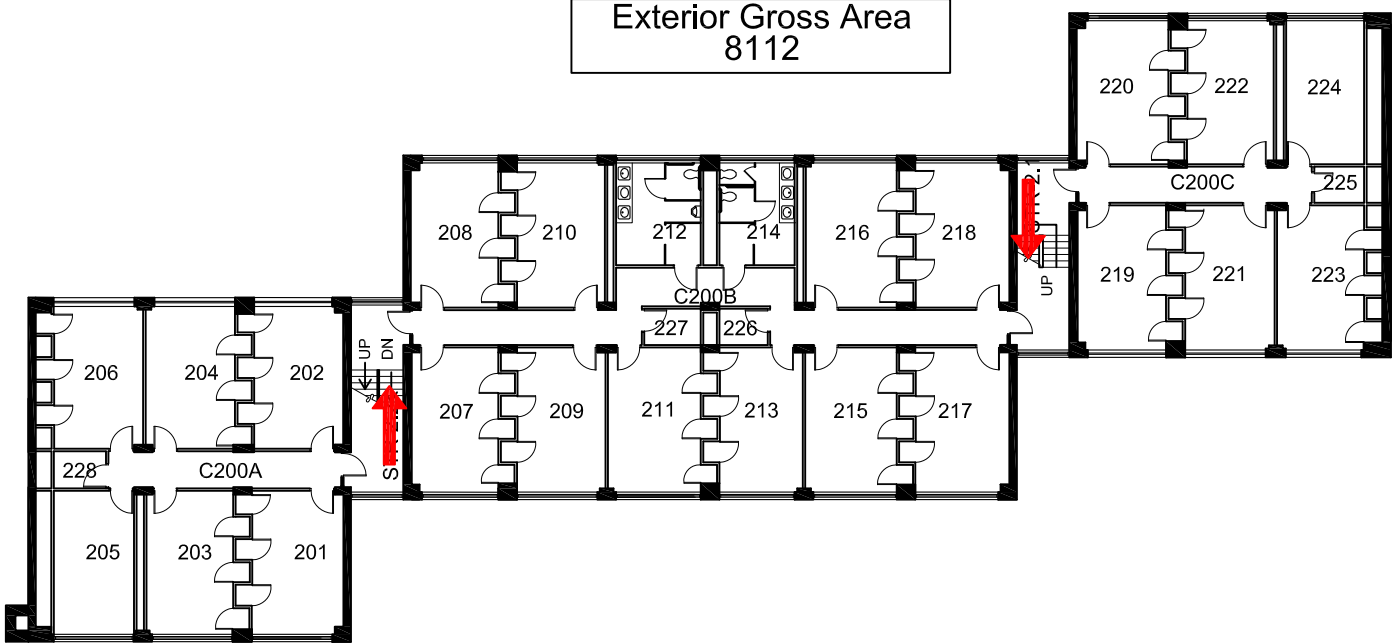
 Evacuation Chair

BAIN HALL

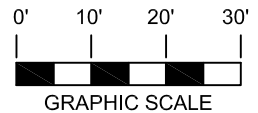
BLDG #0122

02-2009



Exterior Gross Area
8112





SECOND FLOOR PLAN




Safety Legend

-  Areas of Refuge
-  Tornado Shelter Areas

 Exit/Evacuation Routes
In case of fire, do not use elevator

 Automatic External Defibrillator

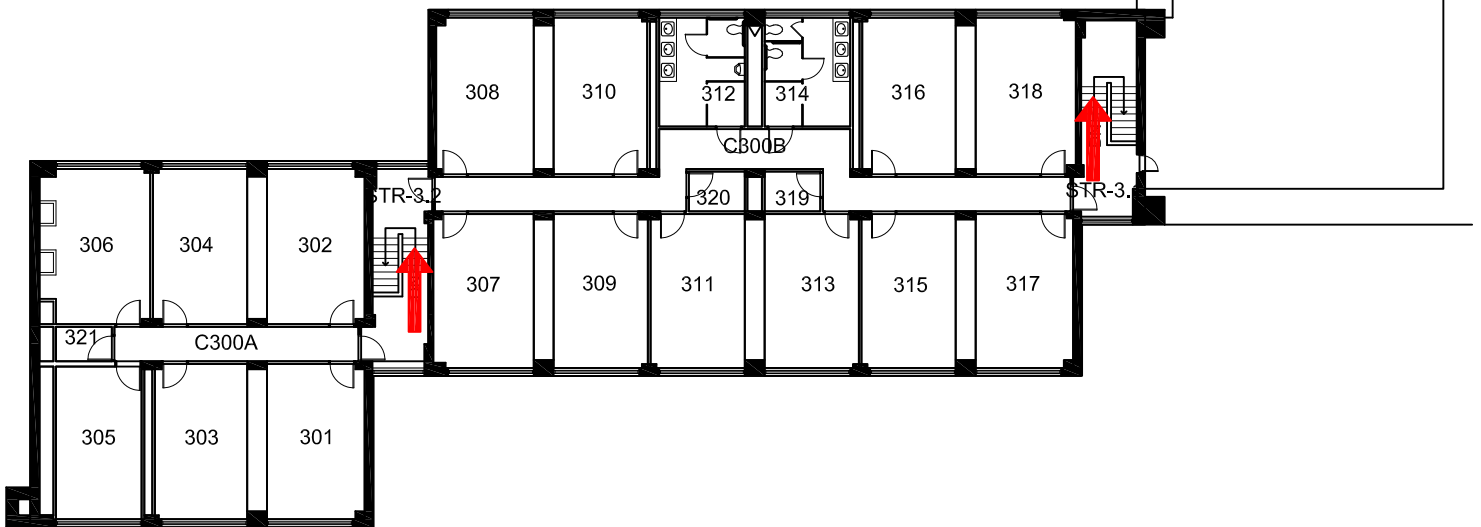
 Evacuation Chair

BAIN HALL

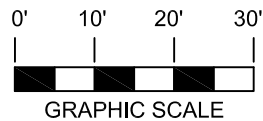
BLDG #0122

02-2009

Exterior Gross Area
6159



THIRD FLOOR PLAN



Safety Legend



Areas of Refuge



Tornado Shelter Areas



Exit/Evacuation Routes

In case of fire, do not use elevator

AED Automatic External Defibrillator

CHAIR Evacuation Chair