

Emergency Evacuation Procedures

College Inn

Page Navigation

- [Severe Weather](#)
 - [Bomb Threat/Fire](#)
 - [Building Evacuation Maps](#)
-

Severe Weather

In the event of severe weather, all building occupants should immediately seek shelter in the designated shelter-in-place area in the building. If unable to safely move to the designated shelter-in-place area, seek shelter in a windowless interior room or hallway on the lowest floor of the building.

Residents should take shelter inside their bathrooms.

Bomb Threat/Fire

In the event of a bomb threat or fire in the building, all building occupants should immediately evacuate the building using the nearest exit. Once outside, proceed to the designated assembly area. If unable to safely move to the designated assembly area, contact your RA to let them know you are safe and inform them of your whereabouts.

Persons with mobility impairments who are unable to safely exit the building should move to a designated area of refuge and await assistance from emergency responders.

Residents should congregate in parking lot 7 southeast of the College Inn.

Building Evacuation Maps

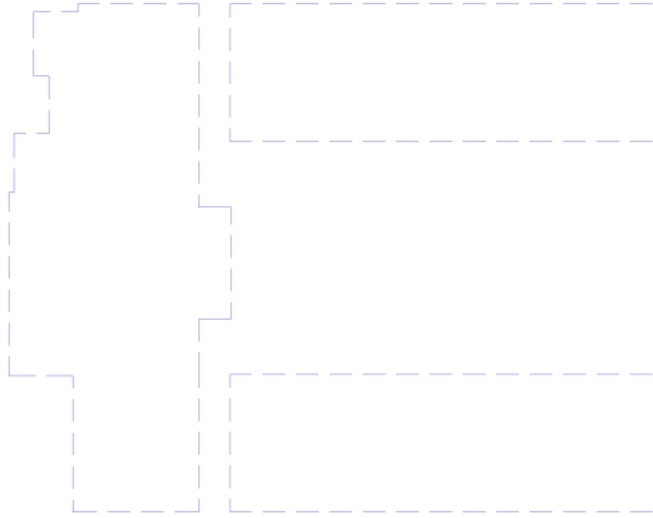
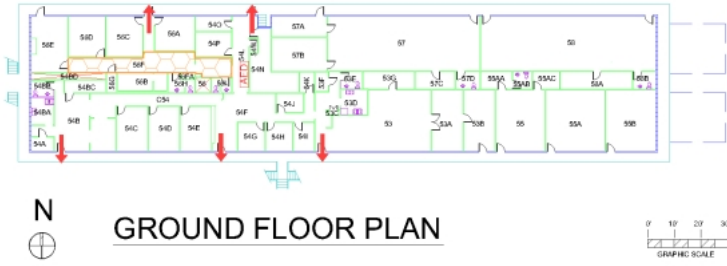
[Print Full Size Map](#)

COLLEGE INN

BLDG # 0183
11-2008

- Safety Legend**
- Areas of Refuge
 - Tornado Shelter Areas
 - Exit/Evacuation Routes
In case of fire, do not use elevator
 - AED Automatic External Defibrillator
 - CEM Evacuation Chair

Exterior Gross Area
12082








[Print Full Size Map](#)

COLLEGE INN

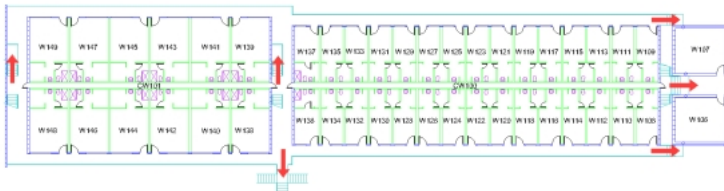
BLDG # 0183

06-2008

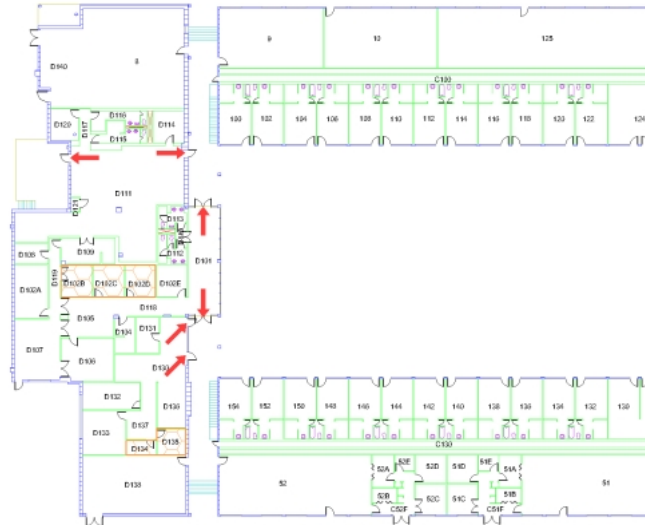
Safety Legend

-  Areas of Refuge
-  Tornado Shelter Areas
-  Exit/Evacuation Routes
- In case of fire, do not use elevator*
-  AED: Automatic External Defibrillator
-  Echir: Evacuation Chair

Exterior Gross Area
40001



FIRST FLOOR PLAN



[Print Full Size Map](#)

COLLEGE INN

BLDG # 0183

06-2008

Exterior Gross Area
38361

- Safety Legend
- Areas of Refuge
 - Tornado Shelter Areas
 - Exit/Evacuation Routes
 - In case of fire, do not use elevator*
 - (AED) Automatic External Defibrillator
 - (EMR) Evacuation Chair

