

Emergency Evacuation Procedures

Auditorium – English Building

Severe Weather

In the event of severe weather, all building occupants should immediately seek shelter in the designated shelter-in-place area in the building. If unable to safely move to the designated shelter-in-place area, seek shelter in a windowless interior room or hallway on the lowest floor of the building.

All building occupants should take shelter in room 100.

Bomb Threat/Fire

In the event of a bomb threat or fire in the building, all building occupants should immediately evacuate the building using the nearest exit. Once outside, proceed to the designated assembly area. If unable to safely move to the designated assembly area, contact one or more members of your department or unit to let them know you are safe and inform them of your whereabouts.

Persons with mobility impairments who are unable to safely exit the building should move to a designated area of refuge and await assistance from emergency responders.

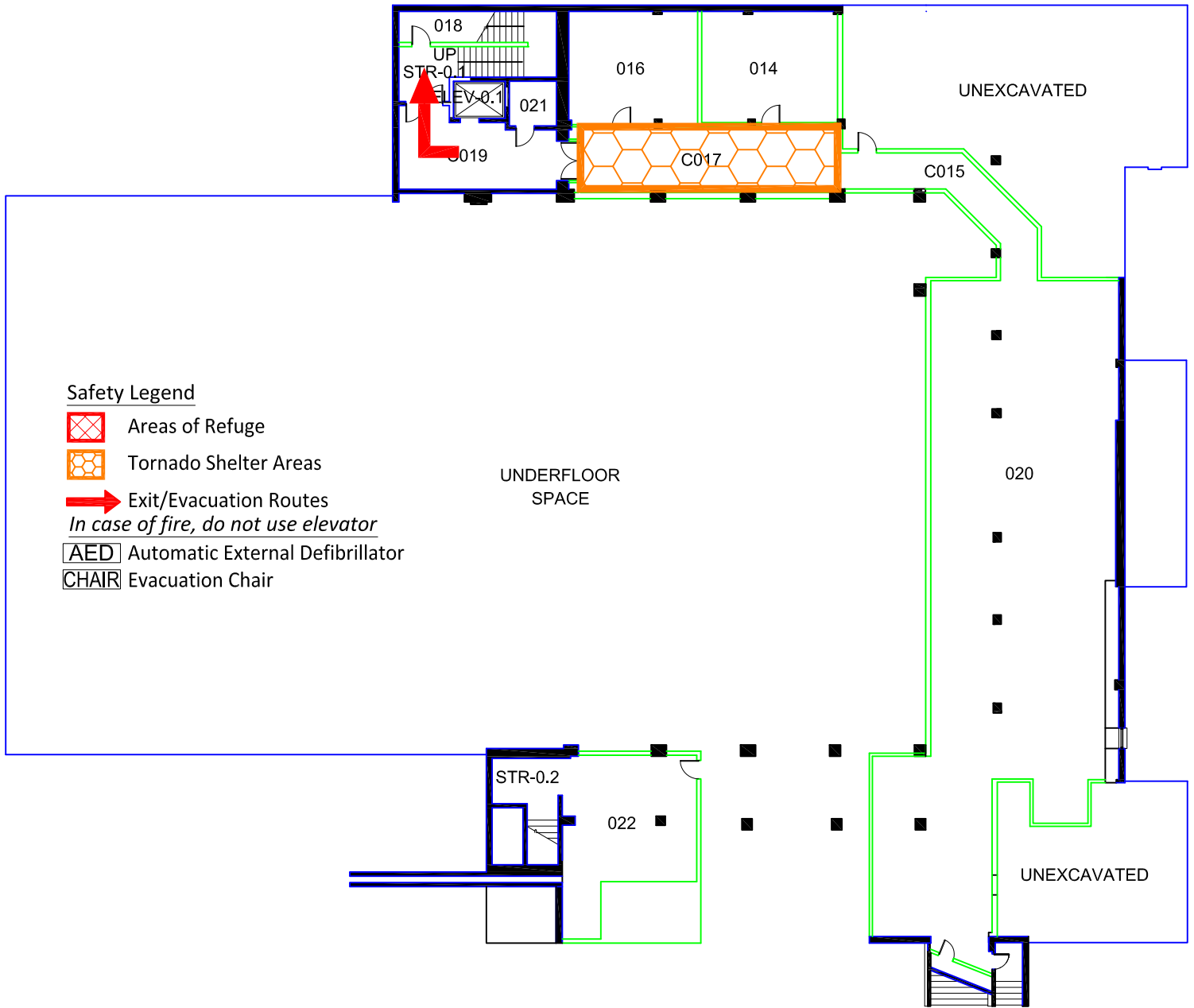
All building occupants should immediately evacuate the building and proceed to parking lot 9 south of the building.

AUDITORIUM - ENGLISH BUILDING



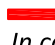


BLDG #0102

10-2011

Exterior Gross Area
6812

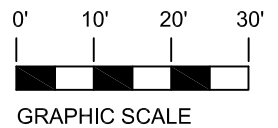


Safety Legend

-  Areas of Refuge
-  Tornado Shelter Areas
-  Exit/Evacuation Routes
In case of fire, do not use elevator
-  Automatic External Defibrillator
-  Evacuation Chair



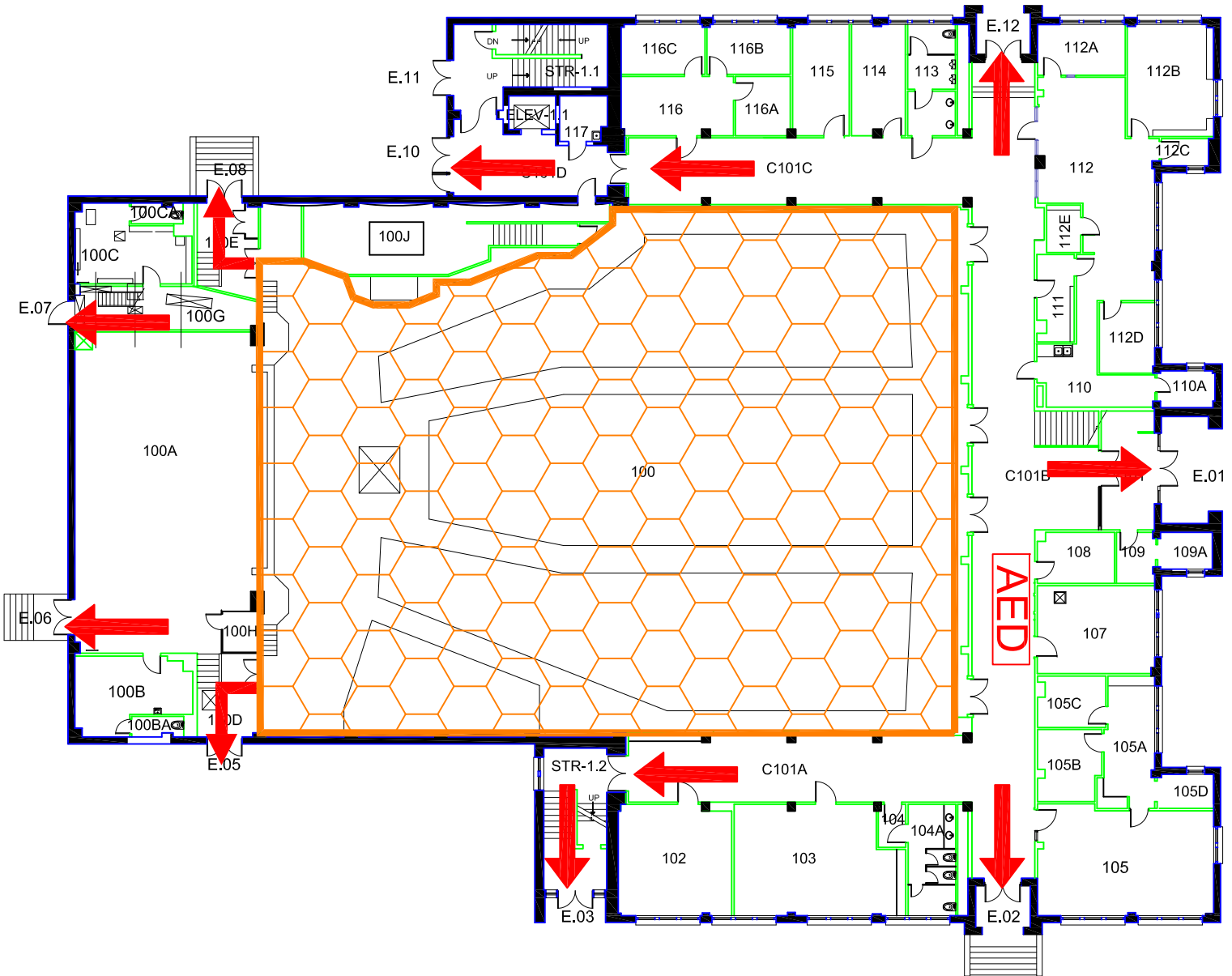
BASEMENT FLOOR PLAN



AUDITORIUM - ENGLISH BUILDING




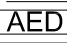

BLDG #0102
10-2012

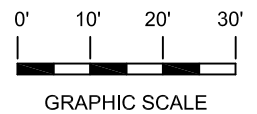
Exterior Gross Area
24733



FIRST FLOOR PLAN

Safety Legend

-  Areas of Refuge
-  Tornado Shelter Areas
-  Exit/Evacuation Routes
In case of fire, do not use elevator
-  AED Automatic External Defibrillator
-  CHAIR Evacuation Chair

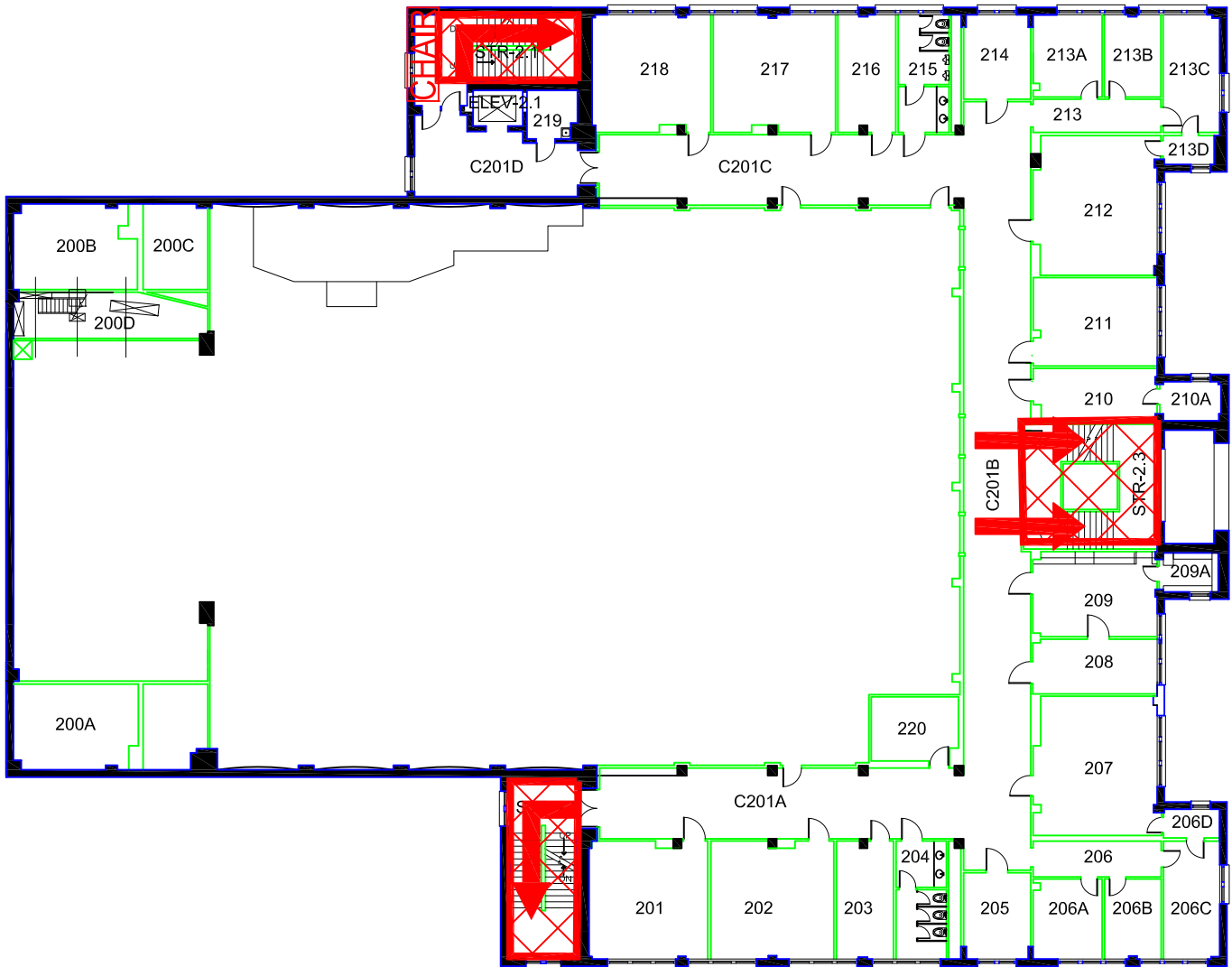


AUDITORIUM - ENGLISH BUILDING

BLDG #0102

09-2012


Exterior Gross Area
12471




SECOND FLOOR PLAN


Safety Legend

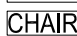
 Areas of Refuge

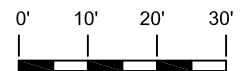
 Tornado Shelter Areas

 Exit/Evacuation Routes

In case of fire, do not use elevator

 Automatic External Defibrillator

 Evacuation Chair

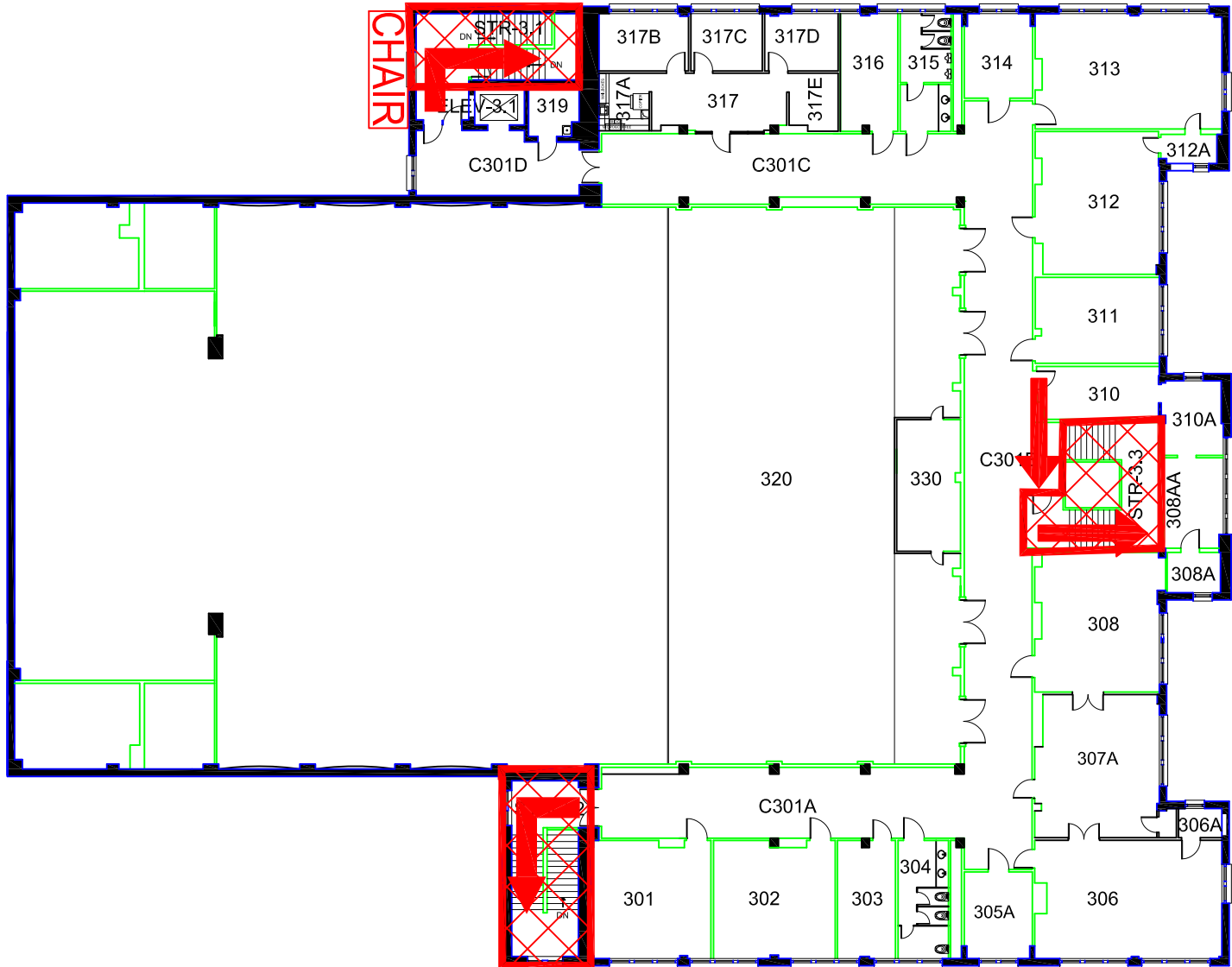


GRAPHIC SCALE

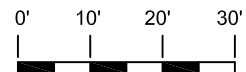
AUDITORIUM - ENGLISH BUILDING

BLDG #0102
10-2011






Exterior Gross Area
15349



THIRD FLOOR PLAN



Safety Legend

-  Areas of Refuge
-  Tornado Shelter Areas
-  Exit/Evacuation Routes
- In case of fire, do not use elevator*
-  AED Automatic External Defibrillator
-  CHAIR Evacuation Chair